

GEOLOGICAL MAP of the Western part of the DOUGLAS COPPER RANGE, IN DOUGLAS CO., WIS.

BY U. S. GRANT, 1899.

BY U. S. GRANT, 1899.

CAMBRIAN Lake Superior sandstone.

LOWER KEWEENAWAN Igneous rocks, largely basic lava flows.

● Copper.

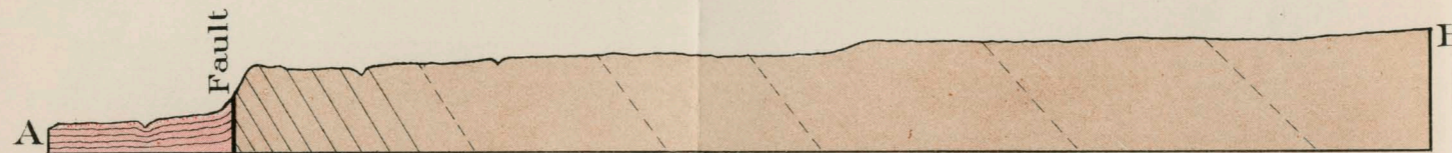
▨ Exposures of sedimentary rock.

▩ Exposures of igneous rock.

— Lines of exploration by the Wisconsin Survey, 1899.

Scale of map, 1 inch = 1 mile.

Scale of section, 1 inch = 1/2 mile.



Section along line A B

