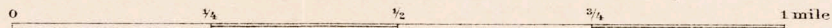


WISCONSIN GEOLOGICAL AND NATURAL HISTORY SURVEY  
E. A. BIRGE, Director U.S. GRANT, in charge of survey of lead and zinc district

# DODGEVILLE SHEET

OF THE LEAD AND ZINC DISTRICT

By U.S. Grant, M.J. Perdue, G.S. Fulcher, and G.H. Cady



Scale: 4 inches = 1 mile

Contour interval: 10 feet

Drawn by G.S. Fulcher

x 1142 Elevations (of ground) in feet above sea-level

■ Shafts

°° Small shafts and test-pits

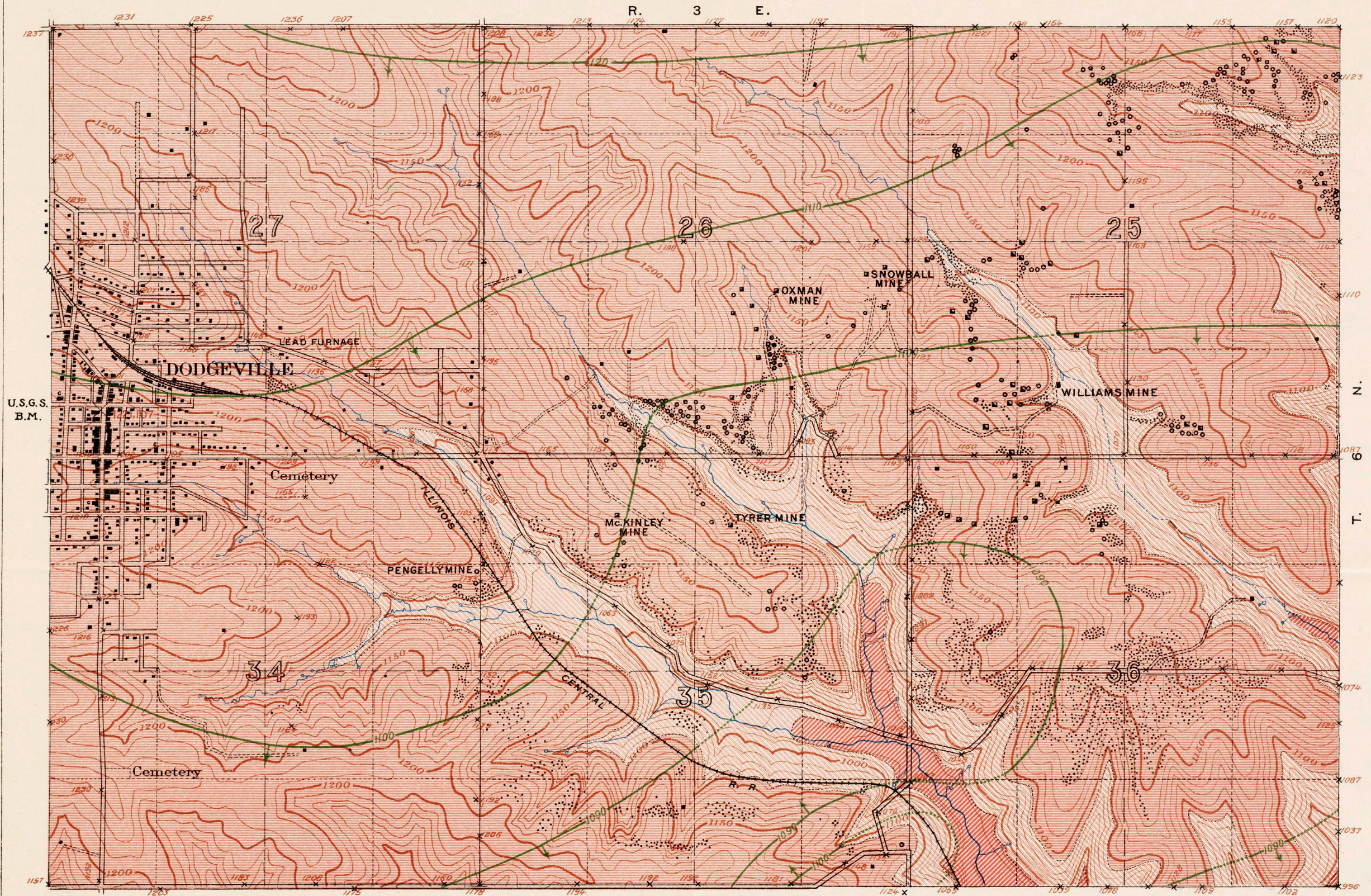
⋯ Old workings

Contour lines on base of Galena limestone, showing elevation in feet above sea-level; where lines are of short dashes Galena limestone has been removed by erosion; arrows indicate direction of dip.

Galena limestone

Platteville (or Trenton) limestone

St. Peter sandstone



U.S.G.S. B.M.