

WISCONSIN GEOLOGICAL AND NATURAL HISTORY SURVEY
E. A. BIRGE, Director U.S. GRANT, in charge of survey of lead and zinc district

MEEKERS GROVE SHEET

OF THE LEAD AND ZINC DISTRICT

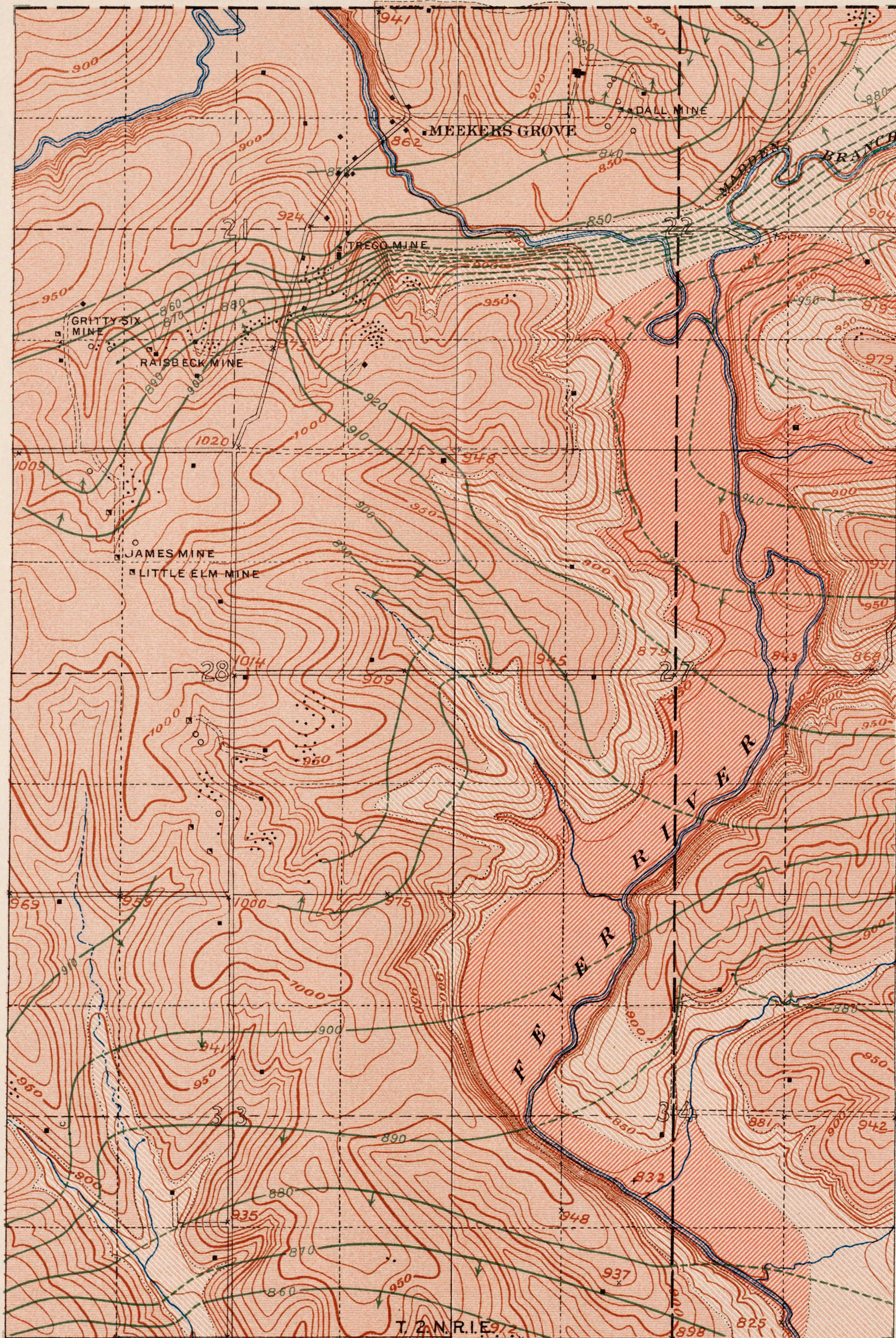
By U.S. Grant, E.T. Hancock, E.E. Ellis, M.J. Perdue, and A.F. Crider

x 842 Elevations (of ground) in feet above sea-level

- ▣ Shafts
- ° Small shafts and test-pits
- ⋯ Old workings

Contour lines on base of Galena limestone, showing elevation in feet above sea-level; where lines are of short dashes Galena limestone has been removed by erosion; where lines are broken their location is doubtful; where lines are lacking information as to their location is not at hand, arrows indicate direction of dip.

- Galena limestone
- Platteville (or Trenton) limestone
- St. Peter sandstone



0 1/4 1/2 3/4 1 mile

Scale: 4 inches - 1 mile

Contour interval: 10 feet

Drawn by W.H. Griffin