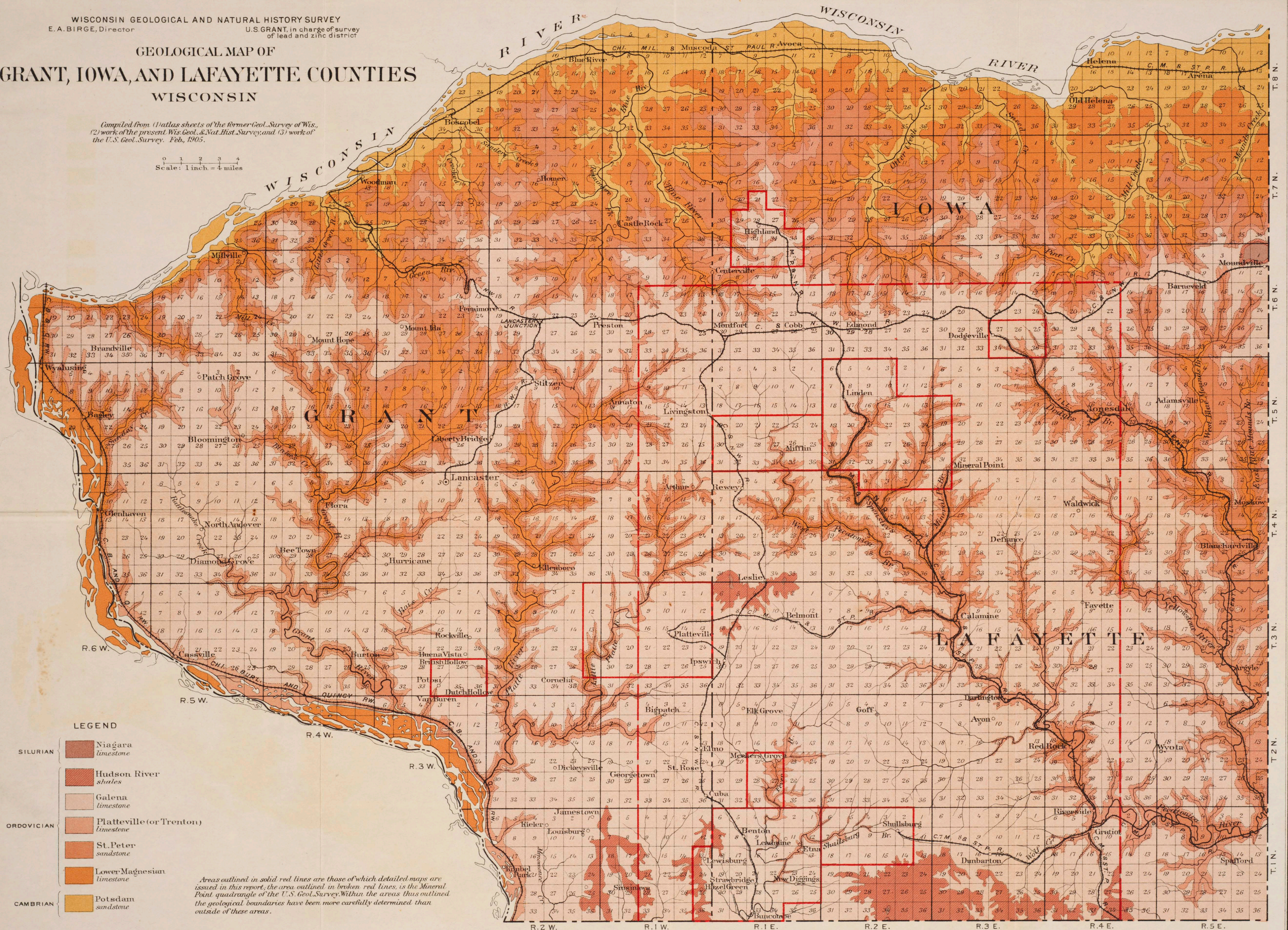


WISCONSIN GEOLOGICAL AND NATURAL HISTORY SURVEY  
E. A. BIRGE, Director  
U.S. GRANT, in charge of survey  
of lead and zinc district

# GEOLOGICAL MAP OF GRANT, IOWA, AND LAFAYETTE COUNTIES WISCONSIN

Compiled from (1) atlas sheets of the former Geol. Survey of Wis.,  
(2) work of the present Wis. Geol. & Nat. Hist. Survey, and (3) work of  
the U.S. Geol. Survey. Feb., 1905.

Scale: 1 inch = 4 miles



Areas outlined in solid red lines are those of which detailed maps are issued in this report; the area outlined in broken red lines, is the Mineral Point quadrangle of the U.S. Geol. Survey. Within the areas thus outlined the geological boundaries have been more carefully determined than outside of these areas.