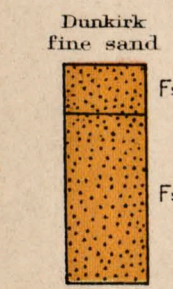
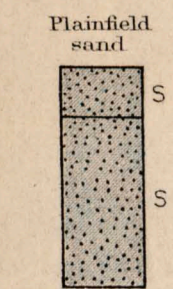
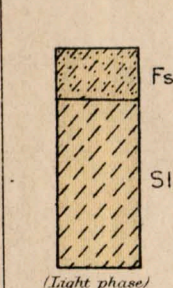
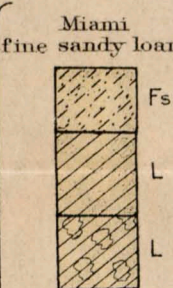
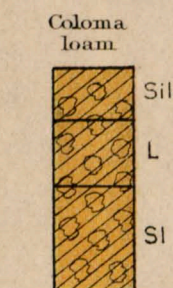
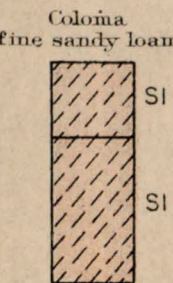
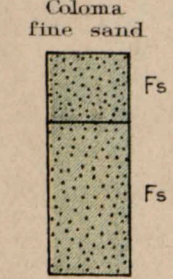


SOIL PROFILE  
(3 feet deep)

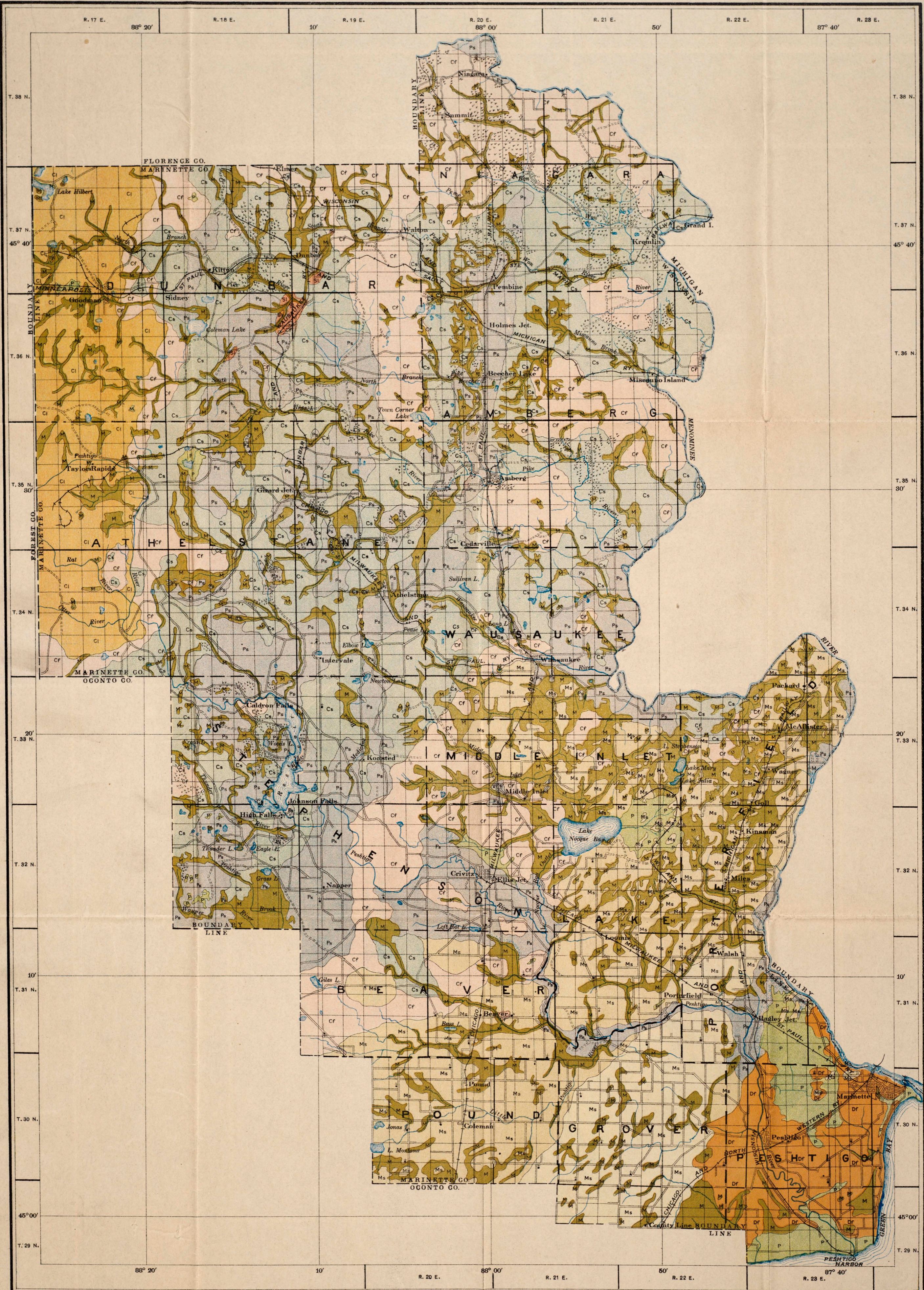


LEGEND

- Fs = Fine Sand
- Sl = Sandy loam
- Sil = Silt loam
- L = Loam
- Fsl = Fine sandy loam
- S = Sand
- C = Clay

LEGEND

- Coloma fine sand (Cs)
- Coloma fine sandy loam (Cf)
- Coloma loam (Cl)
- Miami fine sandy loam (Ms)
- Miami fine sandy loam (Ms) (light phase)
- Plainfield sand (Ps)
- Dunkirk fine sand (Df)
- Superior fine sandy loam (Sl)
- Peat (P)
- Muck (M)
- Rock outcrop



Soil surveyed by  
S. Weidman of the Wisconsin Geological and Natural  
History Survey and Percy O. Wood of the U. S. Dept. of  
Agriculture assisted by E. B. Hall and E. B. Spraker  
of the Wisconsin Geological and Natural History Survey  
1909

Scale 1 inch = 3 miles

The Eckers Lithographing Company, Washington, D. C.

Field Operations  
Bureau of Soils  
1909