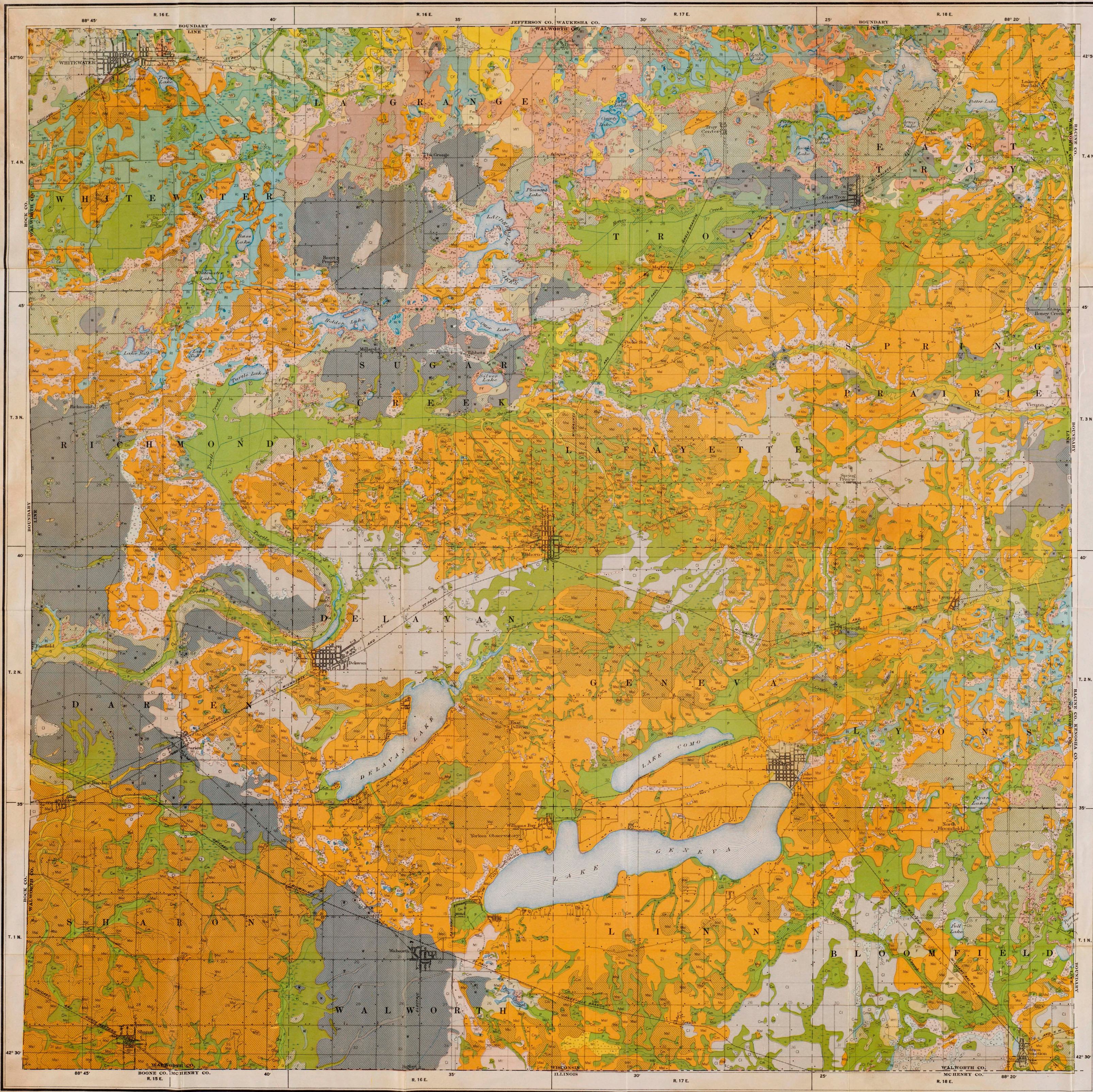


# SOIL MAP OF WALWORTH COUNTY, WISCONSIN



## KEY TO SOIL MAP

NAME OF SOIL	AREA IN ACRES	DESCRIPTION OF SOIL AND SUBSOIL	SURFACE FEATURES AND DRAINAGE
Miami Silt Loam	81,024	Light brown silt loam with yellowish or reddish brown subsoil grading into gritty clay loam at about 2 feet.	Surface undulating to rolling—some-what bumpy in places. Drainage good.
Miami Silt Loam Deep Phase	39,552	Grayish brown silt loam with yellowish heavy silt loam subsoil. Silty clay loam below 2 feet. Three foot section free from coarse material.	Surface undulating to gently rolling. Mostly long gentle slopes. Drainage usually good. Slightly deficient along some lower slope.
Miami Silt Loam Level Phase	9,856	Gray silt loam, frequently mottled. Subsoil is gray or yellowish, mottled silty clay loam.	Surface flat to gently sloping. Drainage somewhat deficient. Soil rather cold and backward in spring.
Fox Silt Loam	6,016	Light brown, smooth silt loam with yellowish brown silty clay loam subsoil. Gravel or sand at 18 to 30 inches.	Surface level or nearly so. Includes some patches and terrace slopes. Drainage good.
Fox Silt Loam Deep Phase	18,752	Grayish brown smooth silt loam, with compact silty clay loam subsoil to depth of 5 to 5 feet where sand or gravel is found.	Surface level. Drainage usually good; may be slightly deficient where heavy subsoil is deepest.
Carrington Silt Loam	24,256	Dark colored silt loam with yellowish-brown silty clay loam subsoil.	Surface nearly level to gently rolling. Natural drainage good.
Waukesha Silt Loam	3,200	Dark colored silt loam with heavy subsoil grading into gravel or sand at 24 to 30 inches.	Surface level. Natural drainage good.
Waukesha Silt Loam Deep Phase	29,406	Dark colored silt loam with heavy subsoil extending to a depth of 3 to 5 feet where sand or gravel is found.	Surface level. Natural drainage fair—somewhat deficient where subsoil is deepest.
Miami Loam	25,032	Medium brown loam soil, gravelly in places, with gritty or gravelly clay loam subsoil.	Surface gently rolling to bumpy and hilly. Natural drainage good.
Miami Fine Sandy Loam	3,456	Medium brown fine sandy loam soil, with reddish brown sandy clay loam subsoil. Type somewhat variable.	Surface rolling. Drainage good.
Fox Loam	8,806	Light brown loam soil, gravelly in places, with heavy subsoil grading into sand or gravel at 24 to 30 inches.	Surface level. Drainage good.
Fox Fine Sandy Loam	3,648	Medium brown fine sandy loam soil with sandy clay loam subsoil, grading into sand and gravel.	Surface mostly level. Natural drainage good.
Carrington Loam	2,968	Dark colored loam with sandy clay loam subsoil. Some gravel stones in lower subsoil. Surface somewhat gravelly in places.	Surface nearly level to gently rolling. Natural drainage good.
Waukesha Loam	2,968	Dark colored loam, soil gravelly in places. Gritty clay loam subsoil grading into sand or gravel at 30 to 30 inches.	Surface level. Drainage good.
Belman Gravelly Loam	7,232	Dark brown gravelly soil of variable texture, with gravelly clay loam subsoil grading into gravel beds at 8 to 12 inches.	Surface rough and broken. Drainage excessive.
Miami Stony Loam	1,964	Medium brown soil of variable texture and quite stony, with heavy subsoil grading into gravelly material in places.	Surface extremely rough and broken. Drainage good to excessive.
Coloma Fine Sand	1,792	Light brown, loose fine sand, with yellow fine sand subsoil slightly sticky at 30 to 40 inches.	Surface rolling. Natural drainage excessive.
Plainfield Fine Sand	1,408	Light brown fine sand with yellow fine sand subsoil. Coarser sand and gravel below 3 feet.	Surface level. Natural drainage good to excessive.
Clyde Clay Loam	6,628	Black silty clay loam with heavy mottled clay subsoil. Thin layers of fine sand may be found in subsoil. Type variable.	
Clyde Silt Loam	41,280	Black heavy silt loam, with drab or bluish mottled silty clay loam subsoil. Layers of fine sand are found in deep subsoil in places.	Surface low, level or depressed, and natural drainage poor.
Clyde Loam	2,172	Black loam with yellow to gray or mottled loam subsoil, becoming sandy in places. Heavy clay in places at about 4 feet.	
Genesee Silt Loam	6,976	Dark brown silt loam, with yellow, drab or mottled heavy subsoil. Type quite variable.	First bottom land. Low, level, poorly drained and subject to over-flow.
Peat	28,032	Light brown to nearly black partly decayed vegetable matter. Over 15 inches deep. Subsoil usually heavy though variable.	
Peat, Shallow Phase	1,216	Light brown to nearly black partly decayed vegetable matter, less than 15 inches deep. Subsoil usually heavy, though variable.	Surface low, level with poor drainage.

## CONVENTIONAL SIGNS

