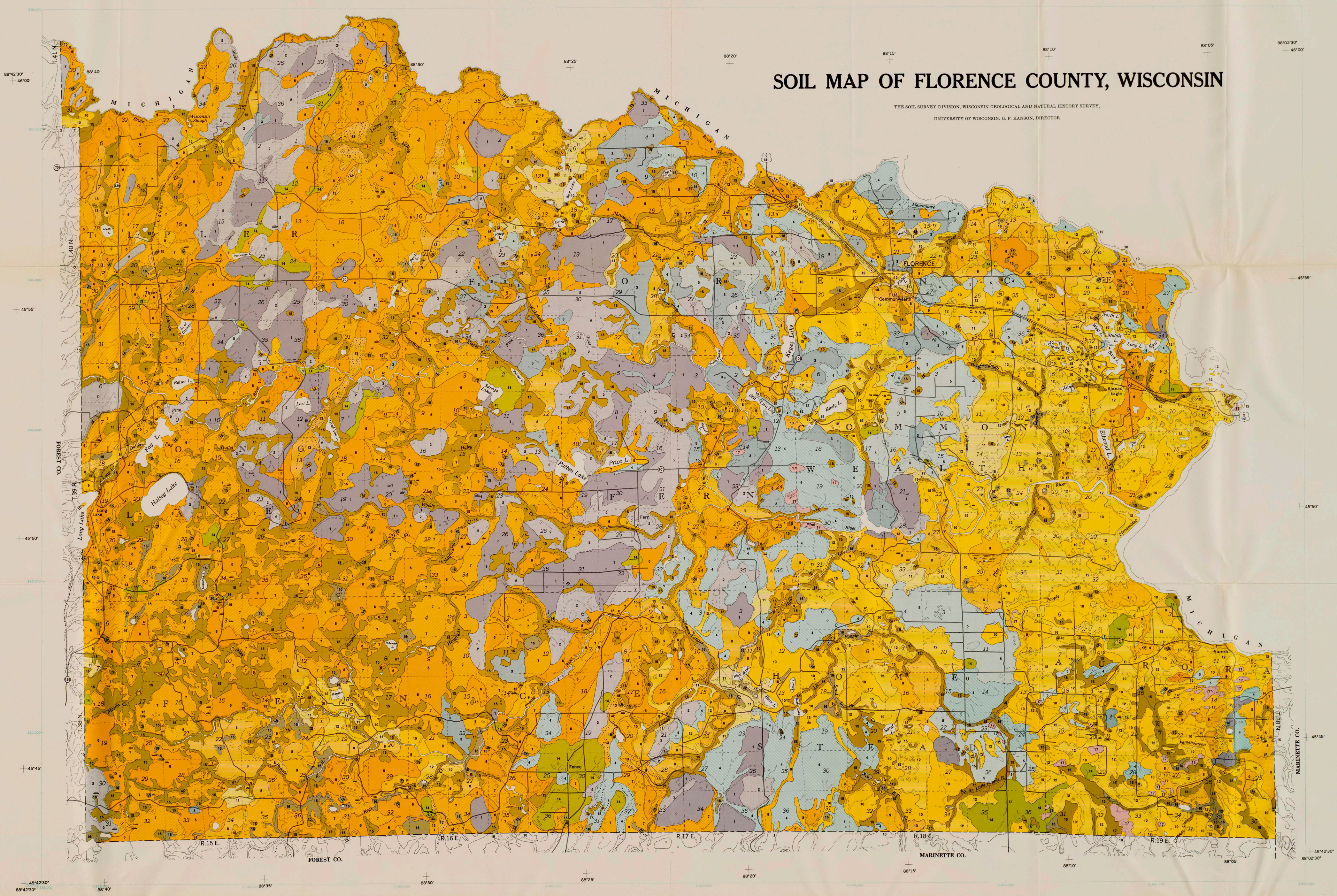


SOIL MAP OF FLORENCE COUNTY, WISCONSIN

THE SOIL SURVEY DIVISION, WISCONSIN GEOLOGICAL AND NATURAL HISTORY SURVEY,  
UNIVERSITY OF WISCONSIN, G. F. HANSON, DIRECTOR



SOILS LEGEND

SOILS OF THE GLACIAL TILL UPLANDS

SOILS FORMED FROM SILTY TO LOAMY DEPOSITS OVERLYING REDDISH-BROWN ACID SANDY LOAM TO CLAY LOAM GLACIAL DRIFT, LARGELY TILL

- 1 Goodman and associated soils, nearly level to undulating
- 2 Goodman and associated soils, rolling to hilly
- 3 Wakefield, Ahmeek and associated soils, nearly level to hilly
- 4 Iron River, Pence and associated soils, nearly level to hilly

SOILS FORMED FROM CALCAREOUS, REDDISH-BROWN CLAY LOAM AND SILTY CLAY LOAM GLACIAL DRIFT, LARGELY TILL, WITH LOCAL SANDY COVERING

- 5 Hibbing, Uby and associated soils, nearly level to rolling

SOILS OF THE GLACIO-FLUVIAL UPLANDS

SOILS FORMED FROM SILTY OR LOAMY DEPOSITS OVER OUTWASH SAND AND GRAVEL

- 6 Stambaugh and associated soils, nearly level to undulating
- 7 Stambaugh and associated soils, rolling to hilly
- 8 Pence, Stambaugh and associated soils, nearly level to undulating
- 9 Pence, Stambaugh and associated soils, rolling to hilly

SOILS FORMED FROM SANDY DEPOSITS OVER GLACIAL DRIFT, LARGELY OUTWASH SAND

- 10 Vilas, Pence and associated soils, nearly level to undulating
- 11 Vilas and associated soils, rolling to hilly
- 12 Vilas, Pence and associated soils, rolling to hilly

SOILS FORMED FROM STONY, GRAVELLY AND SANDY GLACIAL DRIFT, LARGELY OUTWASH

- 13 Emmert, Vilas and associated soils, rolling to hilly

SOILS OF THE GLACIO-LACUSTRINE BASINS

SOILS FORMED FROM DEEP SILTY AND FINE SANDY GLACIO-LACUSTRINE AND INWASH SEDIMENTS

- 14 Fence and associated soils nearly level to undulating

SOILS FORMED LARGELY FROM ORGANIC MATERIALS

- 15 Peat, muck and associated soils, nearly level to gently sloping, with forest cover
- 16 Peat, muck and associated soils, nearly level to gently sloping, without forest cover

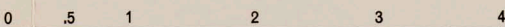
"GRANITIC" ROCKLAND

- 17 "Granitic" rockland and associated soils

Soil Survey, 1968-1961 by the Soil Survey Division, Wisconsin Geological and Natural History Survey, University of Wisconsin in cooperation with the Soils Department, College of Agriculture, University of Wisconsin, and the Soil Conservation Service of the United States Department of Agriculture. Publication by the Soil Survey Division, Wisconsin Geological and Natural History Survey. Soil Survey by Gerald W. Olson, Clarence J. Mifflin, Keith G. Schmude, James F. Krueger and Francis D. Hoot. Reference was made by permission to some farm soil maps of H. V. Stroh of the Soil Conservation Service. Land form and surface drainage map compiled by F. D. Hole from aerial photographs dated July, 1961. Cartography by R. D. Sale and Rodney Heigeland.

LAMBERT CONFORMAL PROJECTION 4000-FOOT GRID (INDICATED IN BLUE)  
BASED ON WISCONSIN COORDINATE SYSTEM, NORTH ZONE

SCALE IN MILES



MAP SIGNS

- County boundary
- Town line
- Section line
- Railroad
- Powerline
- Permanent stream
- Intermittent stream
- Lake
- Soil boundary
- Steep slopes
- Natural pit ("kettle")
- Esker
- Stones
- Rock outcrop
- Gravel pit or quarry
- Village

- U.S. highway
- State highway
- County highway
- Village road

Roads and Highways

