

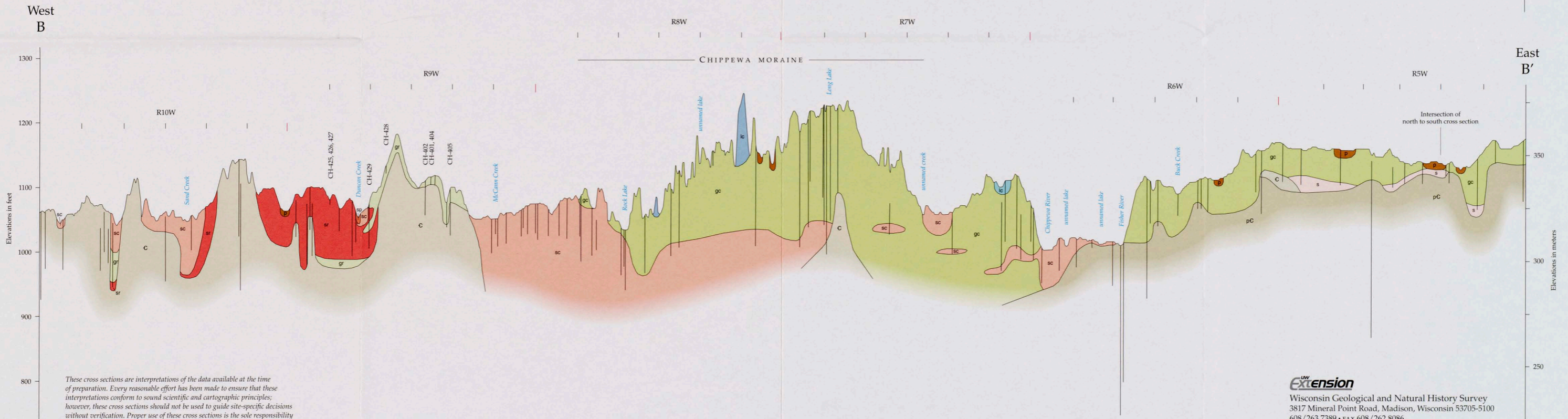
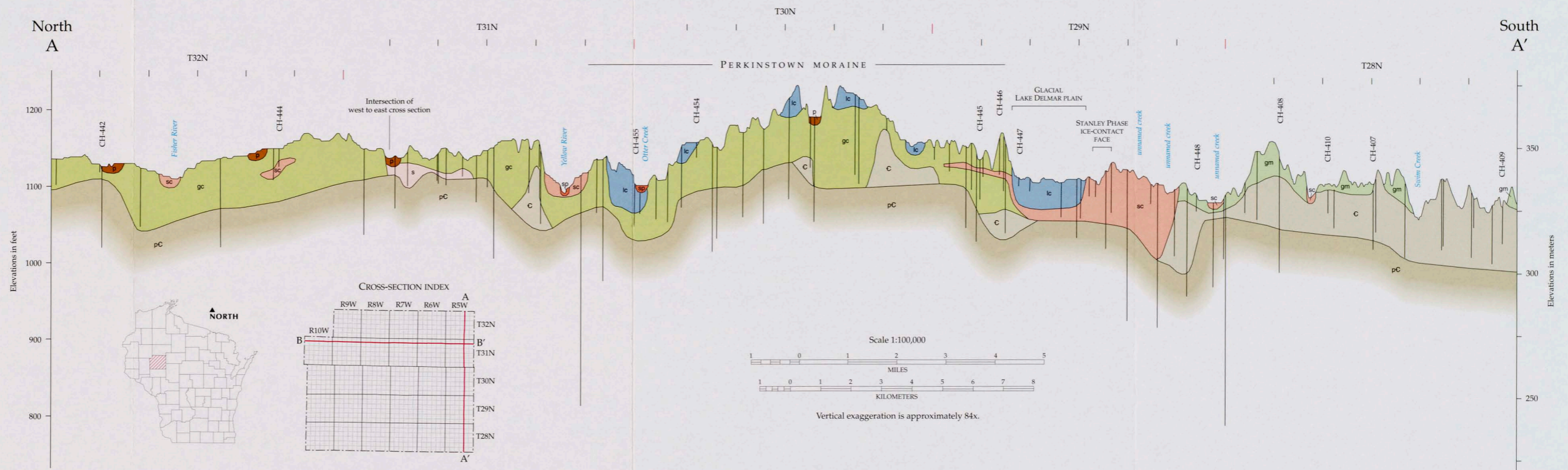
Kent M. Syverson

2007

Explanation

Cross-sections A-A' and B-B' show the generalized vertical relationships between geologic units. They are based on the surficial distribution of materials, logs of holes drilled for this study, and logs of domestic wells that are on file at the Wisconsin Geological and Natural History Survey. Unit designations are the same as those used on the map (plate 1), with the following exceptions:

- sc** Stream sediment of the Copper Falls Formation (map units *sc*, *scp*, and *sch*). This unit may include stream sediment of the River Falls and Lincoln Formations at depth.
- gc** Glacial sediment of the Copper Falls Formation (map units *gc*, *gcf*, and *gch*).
- s** Stream sediment, undifferentiated.
- lc** Lacustrine sediment of the Copper Falls Formation (map units *lc* and *lcp*).
- Well location. Symbol represents approximate elevation of well, which may be as far as 1.6 km from line of cross section.



These cross sections are interpretations of the data available at the time of preparation. Every reasonable effort has been made to ensure that these interpretations conform to sound scientific and cartographic principles; however, these cross sections should not be used to guide site-specific decisions without verification. Proper use of these cross sections is the sole responsibility of the user.

Cartography by D.L. Patterson.

PLATE 2. PLEISTOCENE GEOLOGIC CROSS SECTIONS OF CHIPPEWA COUNTY, WISCONSIN.