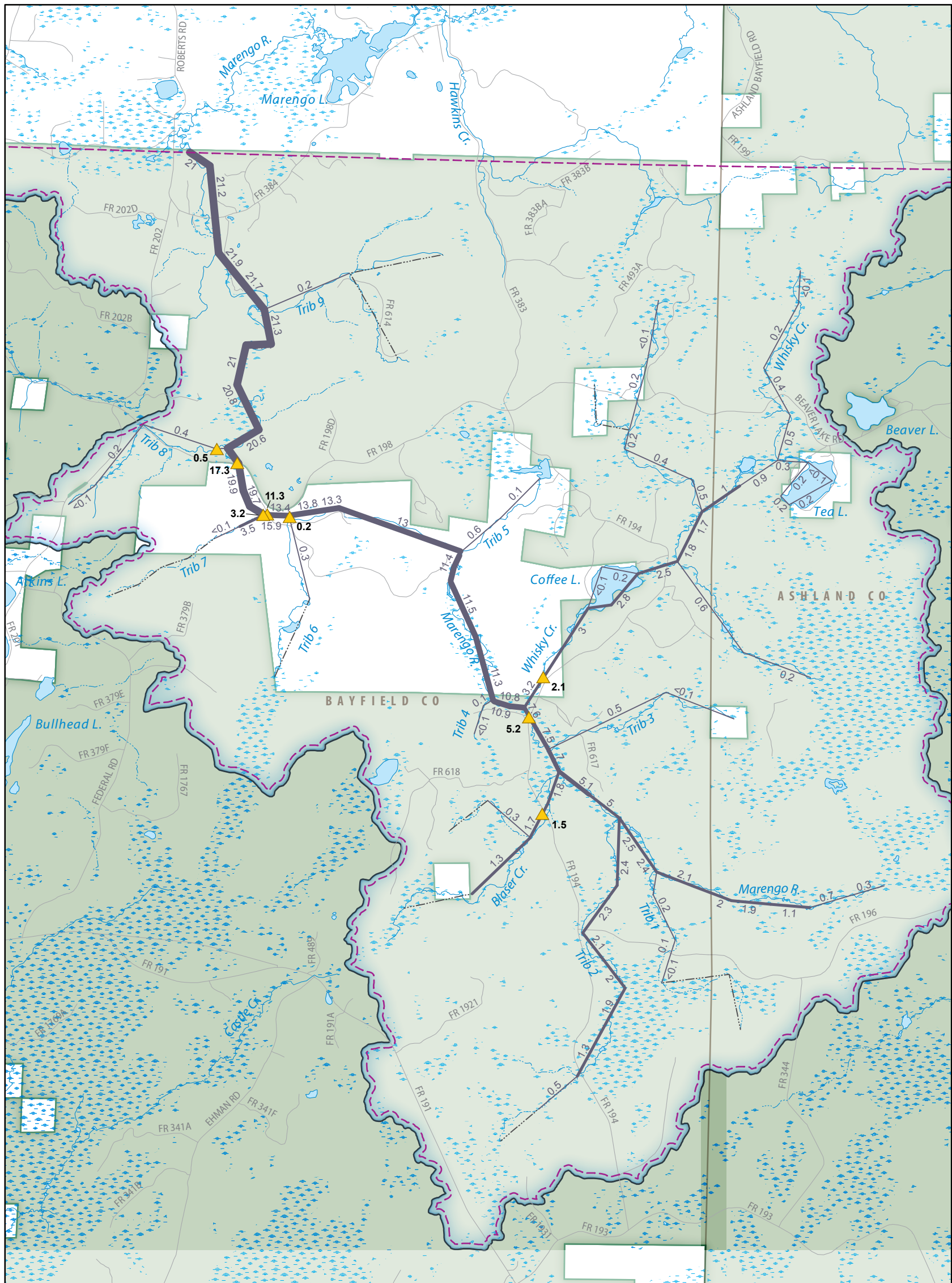


POTENTIAL EFFECTS OF CLIMATE CHANGE ON STREAM TEMPERATURE IN THE MARENGO RIVER HEADWATERS

Bulletin 115 • 2021

Anna C. Fehling and David J. Hart

Plate 1. Simulated baseflow of the Marengo River headwaters at current long-term average conditions



Simulated baseflow
(Number along line symbol indicates baseflow, in cubic feet per second. Baseflow was simulated by groundwater-flow model explained in accompanying report.)

- >15–25
- >10–15
- >5–10
- >1–5
- >0–1
- Dry

- Marengo River watershed
- ▭ Study area
- National forest
- Wetland
- Roads
- Perennial stream
- Intermittent stream
- ▲ Baseflow target—label shows value in cfs

