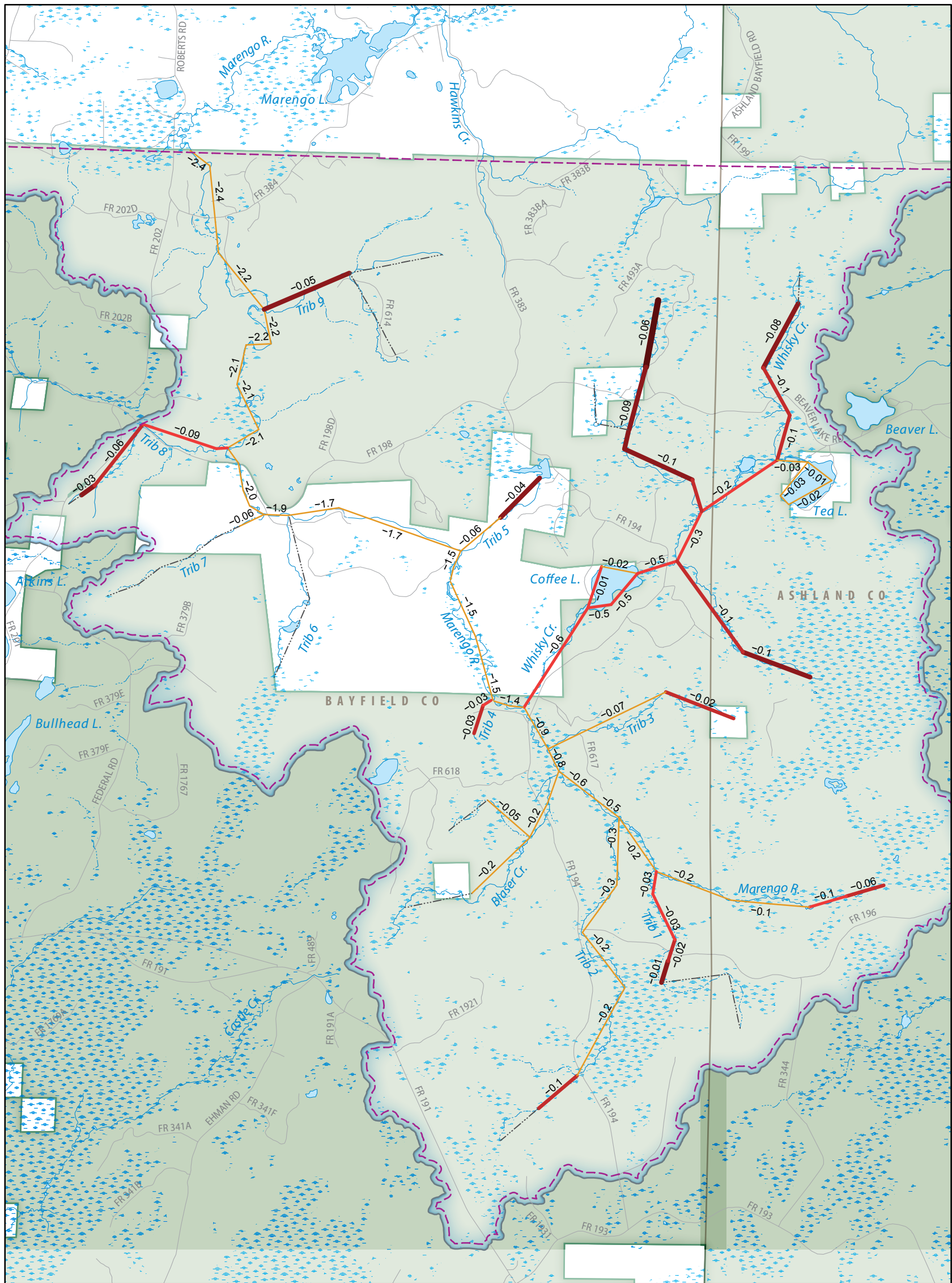


POTENTIAL EFFECTS OF CLIMATE CHANGE ON STREAM TEMPERATURE IN THE MARENGO RIVER HEADWATERS

Bulletin 115 • 2021

Anna C. Fehling and David J. Hart

Plate 3. Simulated baseflow of the Marengo River headwaters with 12% decrease in recharge



Simulated decrease in baseflow

(Number along line symbol indicates decrease in baseflow, in cubic feet per second. Baseflow was simulated by groundwater-flow model explained in accompanying report.)

- >50–90%
- >30–50%
- > 20–30%
- > 15–20%
- > 1–15%
- Dry

- Marengo River watershed
- Study area
- National forest
- Wetland
- Roads
- Perennial stream
- Intermittent stream

