

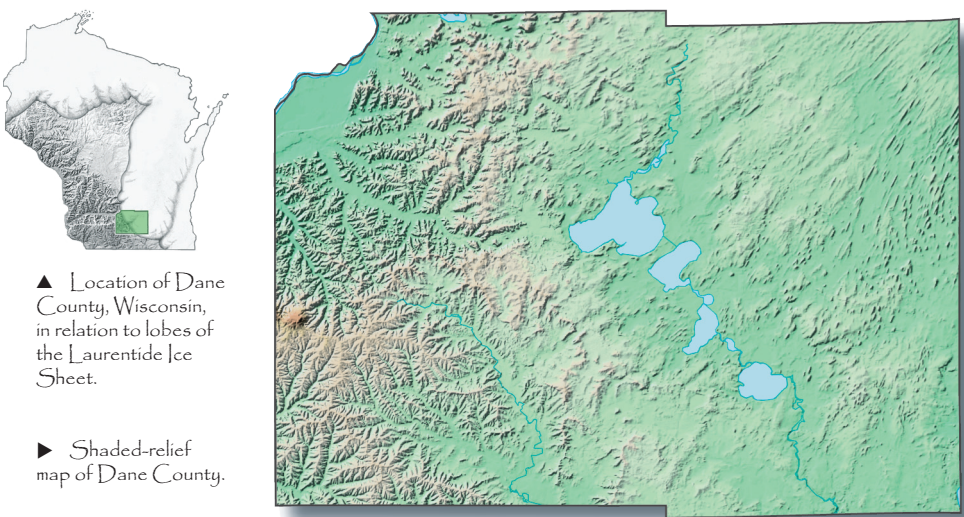
Generalized glacial geologic map of Dane County, Wisconsin

Wisconsin Geological and Natural History Survey
Educational Series 43 • Landscapes of Dane County, Wisconsin



- a** Postglacial deposits. Sand, silt, clay, and organic materials deposited in stream valleys and other lowlands.
- em** End moraine. Ridge parallel to the former ice margin; composed mostly of till. Surface is generally hummocky, contains kettle holes, and is in many places littered with boulders.
- dm** Drumlins and other till surfaces. Streamlined hills and valleys shaped by the bed of the glacier. Surface is smoother and contains fewer large boulders than does the end moraine.
- oi** Glacial stream deposits. Nearly flat outwash to hummocky sand and gravel deposited by streams flowing under, in, and away from ice.
- lp** Lake plains. Sand and silt surfaces deposited in glacial lakes, typically capped by organic material.
- ut** Uplands capped by till. Till was deposited by glaciations prior to the Late Wisconsin ice advance. Hilly terrain with thin, discontinuous cover of glacial deposits and loess.
- br** Uplands and slopes. Hilly bedrock terrain with thin, discontinuous cover of loess.

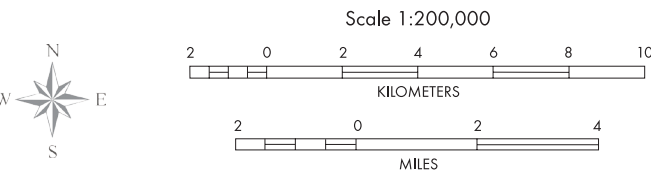
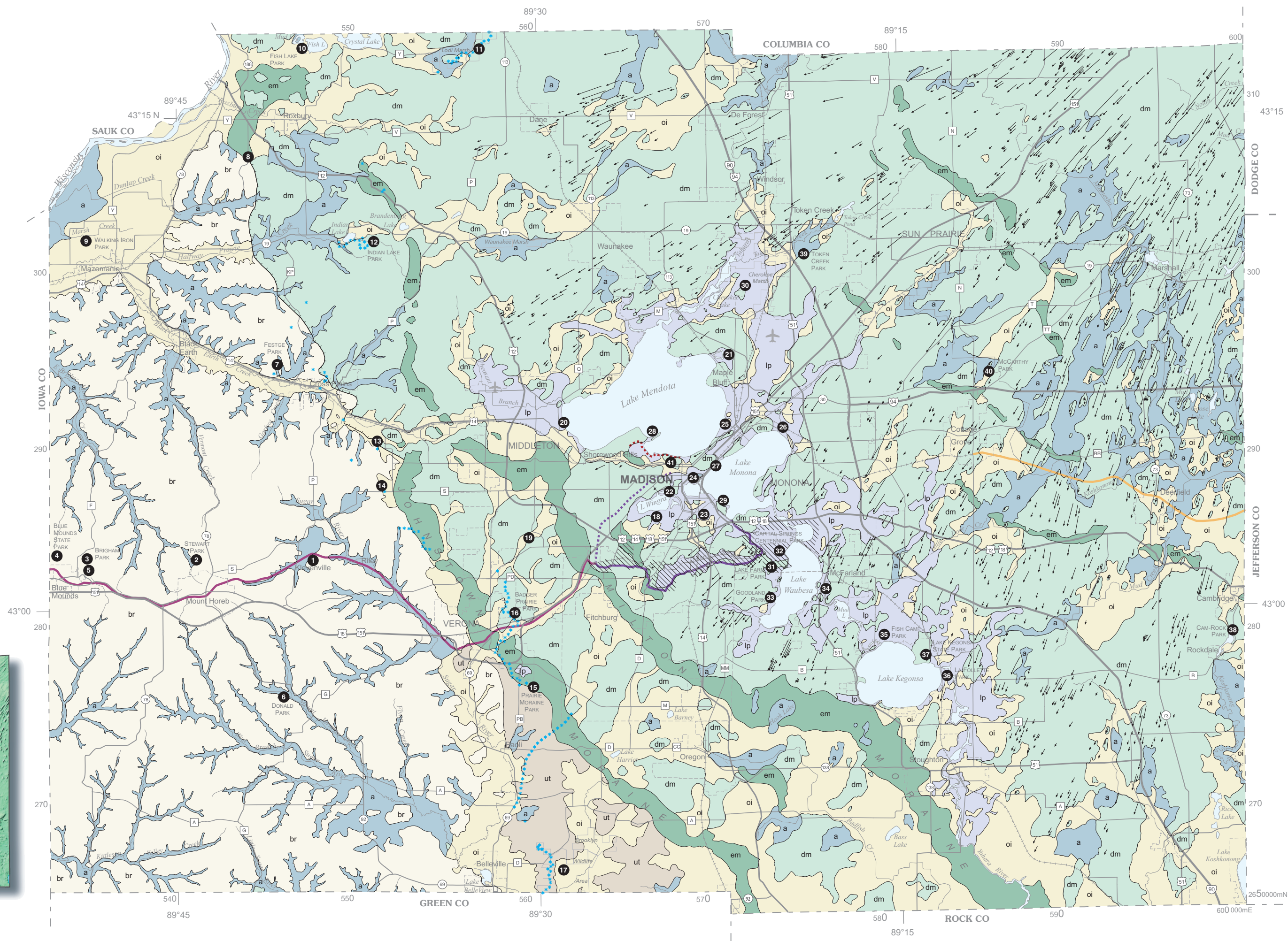
Geology modified from Mickelson, D.M., and McCartney, M.C., 1979, Glacial geology of Dane County, Wisconsin: Wisconsin Geological and Natural History Survey Field Trip Guide Book 6, plate 1, scale 1:100,000. Drumlin information modified from Clayton, Lee, and Attig, J.W., 1997, Pleistocene geology of Dane County, Wisconsin: Wisconsin Geological and Natural History Survey Bulletin 95, plate 1, scale 1:100,000.



Digital cartography and editing by Kathy C. Roushar. Illustrations by Susan L. Hunt.

Published by and available from

uw Extension
Wisconsin Geological and Natural History Survey
3817 Mineral Point Road • Madison, Wisconsin 53705-5100
☎ 608/263.7389 FAX 608/262.8086 www.uwex.edu/wgnhs/
James M. Robertson, Director and State Geologist



In your travels around Dane County,
please remember to respect private property;
do not enter without permission.

Base map constructed from U.S. Geological Survey Digital Line Graph files (1990, scale 1:100,000), modified by Wisconsin Department of Natural Resources (1992) and Wisconsin Geological and Natural History Survey (2006). Wisconsin Transverse Mercator Projection 1991 adjustment to the North American Datum of 1983 (NAD 83/91).

Places of Interest

- 1 Klevenville Quarry
 - 2 Stewart County Park
 - 3 Brigham County Park
 - 4 Blue Mounds State Park
 - 5 Cave of the Mounds
 - 6 Donald County Park
 - 7 Festge County Park
 - 8 Phil's Woods
 - 9 Walking Iron County Park
 - 10 Fish Lake County Park
 - 11 Lodi Marsh segment of the Ice Age Trail
 - 12 Indian Lake County Park
 - 13 Cross Plains Unit of the Ice Age Reserve
 - 14 Shoveler Sink
 - 15 Prairie Moraine County Park
 - 16 Badger Prairie County Park
 - 17 Brooklyn Wildlife Area
 - 18 University of Wisconsin—Madison Arboretum
 - 19 Elver Park
 - 20 Marshall Park
 - 21 Warner Park
 - 22 Vilas Park
 - 23 Quann Park
 - 24 Brittingham Park
 - 25 Tenney Park
 - 26 Olbrich Park
 - 27 Law Park
 - 28 Picnic Point
 - 29 Olin—Turville Park
 - 30 Cherokee Marsh
 - 31 Capital Springs Centennial Park
 - 32 Lake Farm County Park
 - 33 Goodland County Park
 - 34 Babcock County Park
 - 35 Fish Camp County Park
 - 36 La Follette County Park
 - 37 Lake Kegonsa State Park
 - 38 Cam-Rock County Park
 - 39 Token Creek County Park
 - 40 McCarthy County Park
 - 41 Bascom and Observatory Hills
- Nine Springs E-Way
 - Military Ridge Trail
 - Glacial Drumlin Trail
 - Capital City Trail
 - Ice Age Trail (discontinuous)
 - Lakeshore Path
 - Southwest Path