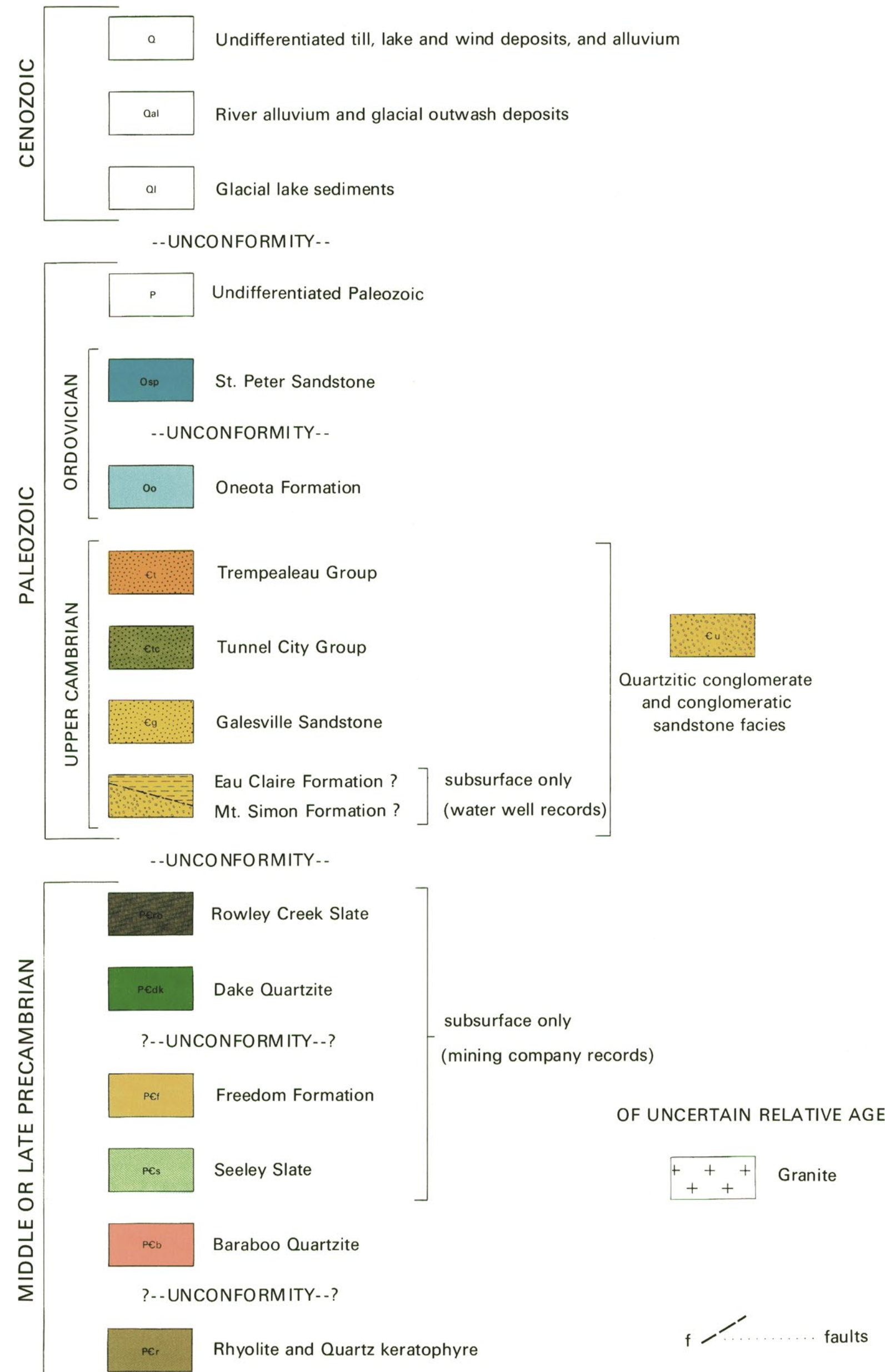


# GEOLOGIC CROSS SECTIONS OF THE BARABOO DISTRICT COLUMBIA AND SAUK COUNTIES, WISCONSIN

By I.W.D. Dalziel and R.H. Dott, Jr.

## EXPLANATION



Lines of sections are shown on accompanying geologic and structural maps  
(Subsurface data from A. Leith, 1935, R.G. Schmidt, 1951, and F.T. Thwaites, unpublished)

UNIVERSITY EXTENSION, THE UNIVERSITY OF WISCONSIN,  
Geological and Natural History Survey, George F. Hanson, State Geologist

1970

