

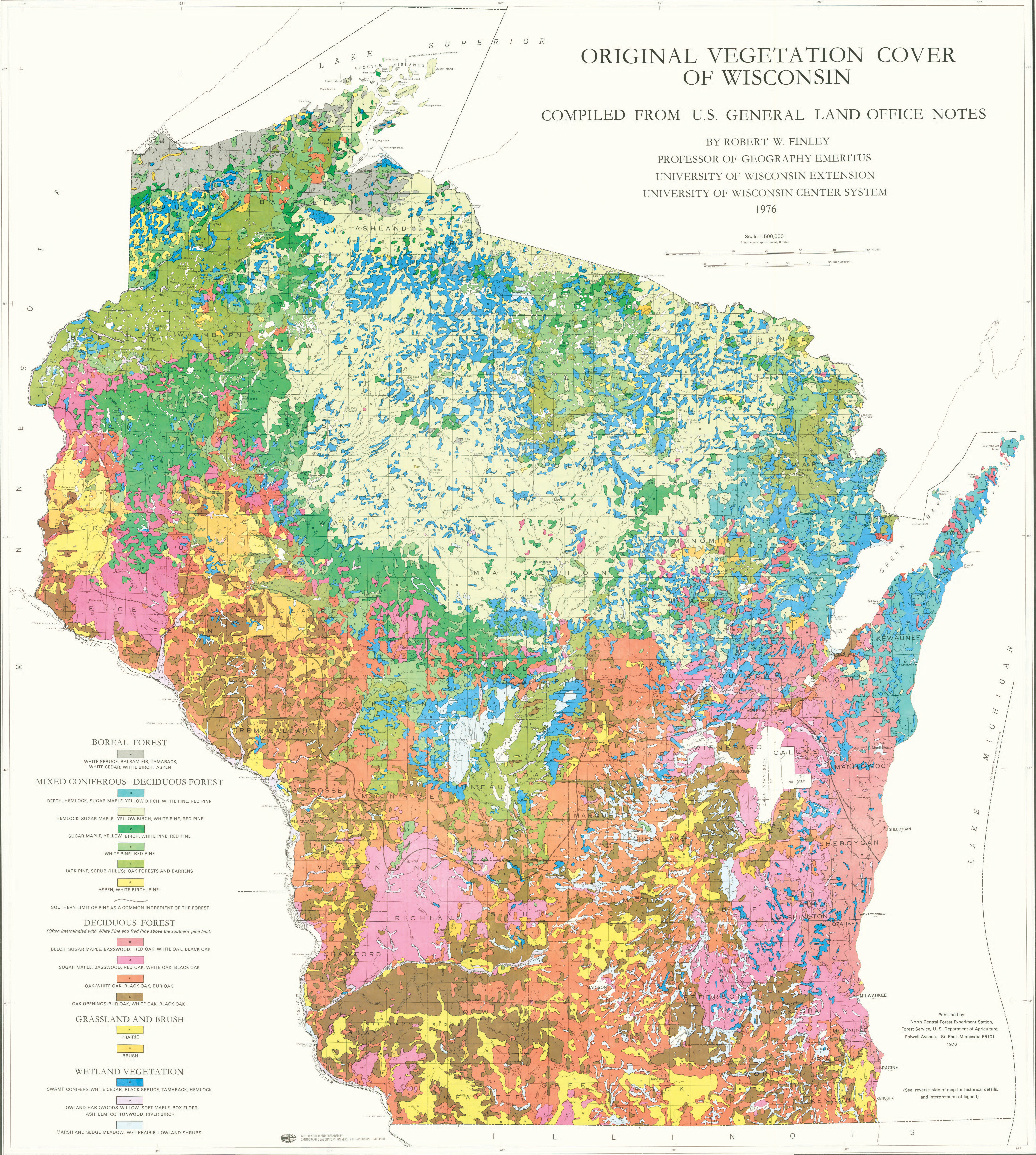
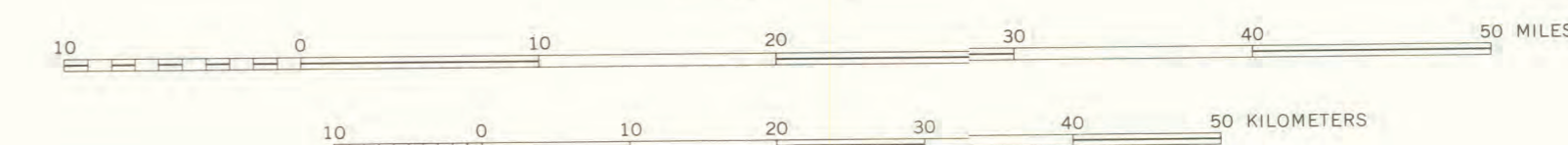
ORIGINAL VEGETATION COVER OF WISCONSIN

COMPILED FROM U.S. GENERAL LAND OFFICE NOTES

BY ROBERT W. FINLEY
PROFESSOR OF GEOGRAPHY EMERITUS
UNIVERSITY OF WISCONSIN EXTENSION
UNIVERSITY OF WISCONSIN CENTER SYSTEM
1976

Scale 1:500,000

1 inch equals approximately 8 miles



BOREAL FOREST

WHITE SPRUCE, BALSAM FIR, TAMARACK,
WHITE CEDAR, WHITE BIRCH, ASPEN

MIXED CONIFEROUS - DECIDUOUS FOREST

BEECH, HEMLOCK, SUGAR MAPLE, YELLOW BIRCH, WHITE PINE, RED PINE

HEMLOCK, SUGAR MAPLE, YELLOW BIRCH, WHITE PINE, RED PINE

SUGAR MAPLE, YELLOW BIRCH, WHITE PINE, RED PINE

WHITE PINE, RED PINE

JACK PINE, SCRUB (HILL'S) OAK FORESTS AND BARRENS

ASPEN, WHITE BIRCH, PINE

SOUTHERN LIMIT OF PINE AS A COMMON INGREDIENT OF THE FOREST

DECIDUOUS FOREST

(Often intermingled with White Pine and Red Pine above the southern pine limit)

BEECH, SUGAR MAPLE, BASSWOOD, RED OAK, WHITE OAK, BLACK OAK

SUGAR MAPLE, BASSWOOD, RED OAK, WHITE OAK, BLACK OAK

OAK-WHITE OAK, BLACK OAK, BUR OAK

OAK OPENINGS-BUR OAK, WHITE OAK, BLACK OAK

GRASSLAND AND BRUSH

PRAIRIE

BRUSH

WETLAND VEGETATION

SWAMP CONIFERS-WHITE CEDAR, BLACK SPRUCE, TAMARACK, HEMLOCK

LOWLAND HARDWOODS-WILLOW, SOFT MAPLE, BOX ELDER,
ASH, ELM, COTTONWOOD, RIVER BIRCH

MARSH AND SEDGE MEADOW, WET PRAIRIE, LOWLAND SHRUBS

Published by
North Central Forest Experiment Station,
Forest Service, U. S. Department of Agriculture,
Folwell Avenue, St. Paul, Minnesota 55101
1976

(See reverse side of map for historical details,
and interpretation of legend)