

AQUIFER POTENTIAL

IRRIGABLE LANDS INVENTORY

PHASE I - GROUND WATER AND RELATED INFORMATION

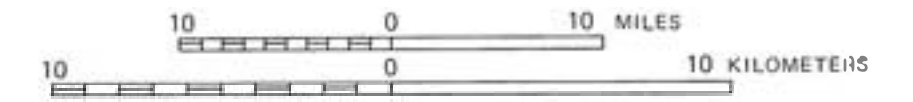
By:
R. G. HENNINGS and I. D. LIPPELT

Prepared by:
WISCONSIN GEOLOGICAL AND NATURAL HISTORY SURVEY

Sponsored by:
GOLDEN SANDS RESOURCE CONSERVATION AND DEVELOPMENT AREA

Funded by:
UPPER GREAT LAKES REGIONAL PLANNING COMMISSION

SEPTEMBER 1981



EXPLANATION

≤ 5
 ≤ 20
 5-100
 100-500
 100-1000
 500-1000+
 1000+

Maximum potential yields (in gallons per minute) expected from fully developed wells in area

Aquifer(s) to obtain potential yields above

Major aquifer	Minor aquifer
SS Sandstone	ss
S/G Sand and Gravel	s/g
XLN Crystalline (granite-like)	xln

+ Maximum potential yield unknown

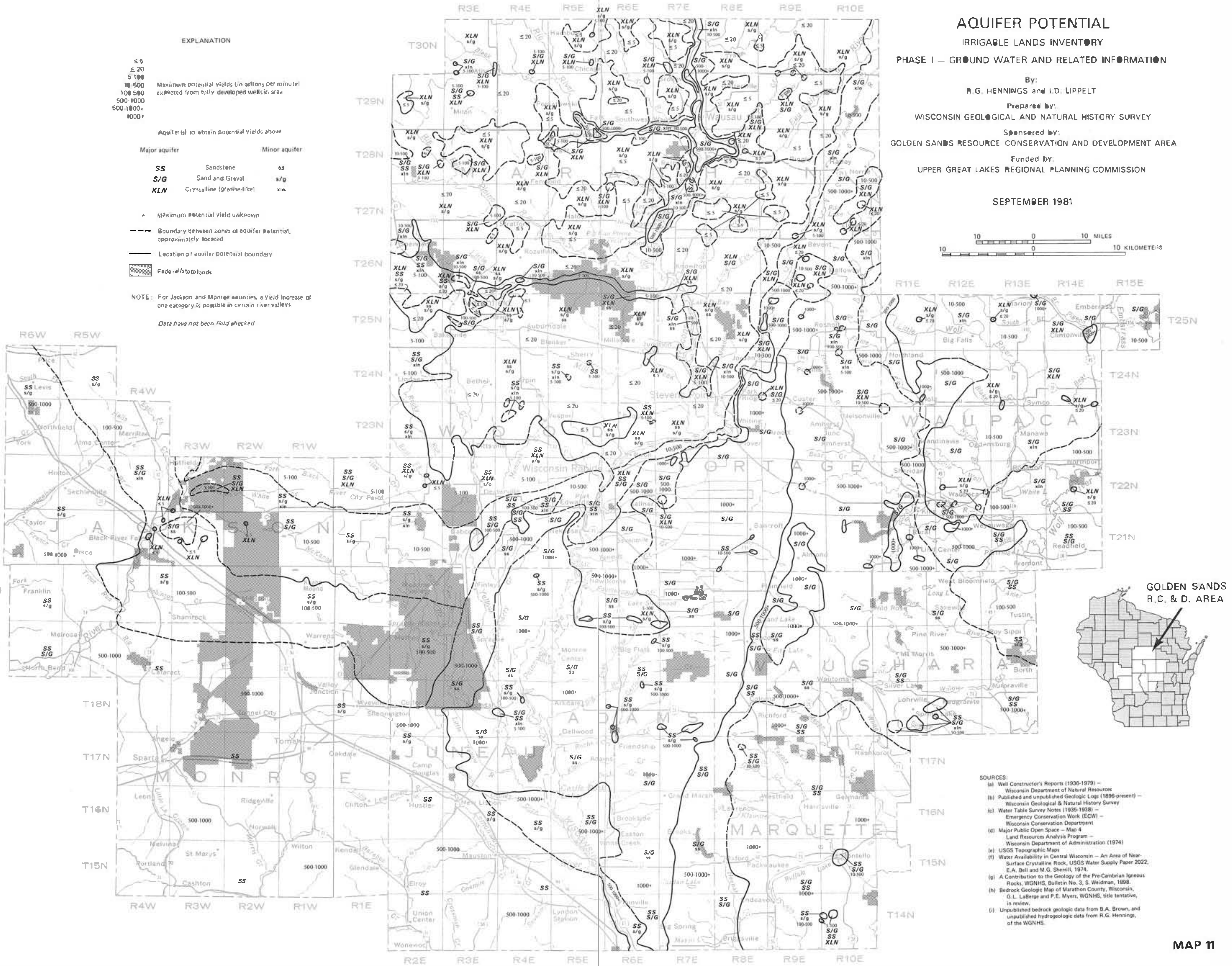
--- Boundary between zones of aquifer potential, approximately located

— Location of aquifer potential boundary

▨ Federal/state lands

NOTE: For Jackson and Monroe counties, a yield increase of one category is possible in certain river valleys.

Data have not been field checked.



- SOURCES:**
- (a) Well Constructor's Reports (1936-1979) - Wisconsin Department of Natural Resources
 - (b) Published and unpublished Geologic Logs (1896-present) - Wisconsin Geological & Natural History Survey
 - (c) Water Table Survey Notes (1935-1938) - Emergency Conservation Work (ECW) - Wisconsin Conservation Department
 - (d) Major Public Open Space - Map 4 - Land Resources Analysis Program - Wisconsin Department of Administration (1974)
 - (e) USGS Topographic Maps
 - (f) Water Availability in Central Wisconsin - An Area of Near-Surface Crystalline Rock, USGS Water Supply Paper 2022, E.A. Bell and M.G. Sherrill, 1974.
 - (g) A Contribution to the Geology of the Pre-Cambrian Igneous Rocks, WGNHS, Bulletin No. 3, S. Weidman, 1898.
 - (h) Bedrock Geologic Map of Marathon County, Wisconsin, G.L. LaBerge and P.E. Myers, WGNHS, title tentative, in review.
 - (i) Unpublished bedrock geologic data from B.A. Brown, and unpublished hydrogeologic data from R.G. Hennings, of the WGNHS.