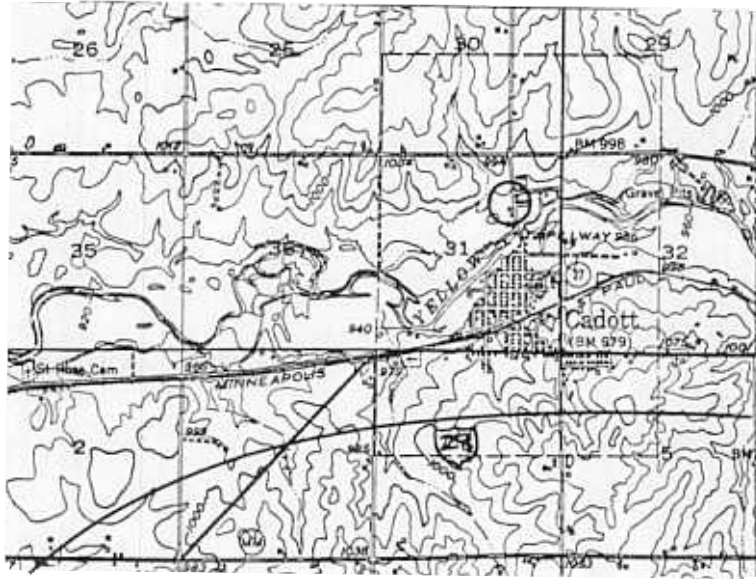


TITLE:

LOCATION: SW 1/4, NE 1/4, Sec 31, T 29 N, R 6 W, Cadott 15' Quadrangle



AUTHOR

DATE:

Faintly foliated hornblende-biotite tonalite complexly veined by leucocratic aplite and pegmatite is strongly folded, faulted, and locally detached and rotated as xenoliths in lighter-colored biotite tonalite. Foliation in the younger tonalite encloses the more mafic xenoliths. An older cataclastic foliation (N10-20°W) is cut by a second cataclastic foliation at N65-75°W. Gneissic hornblende tonalite is the predominant rock type for 3.2 kilometers upstream. Further up the Yellow River the tonalite contains screens and/or pendants of metamorphosed pyroxene gabbro with a strong west-northwest structural grain.

DESCRIPTION:

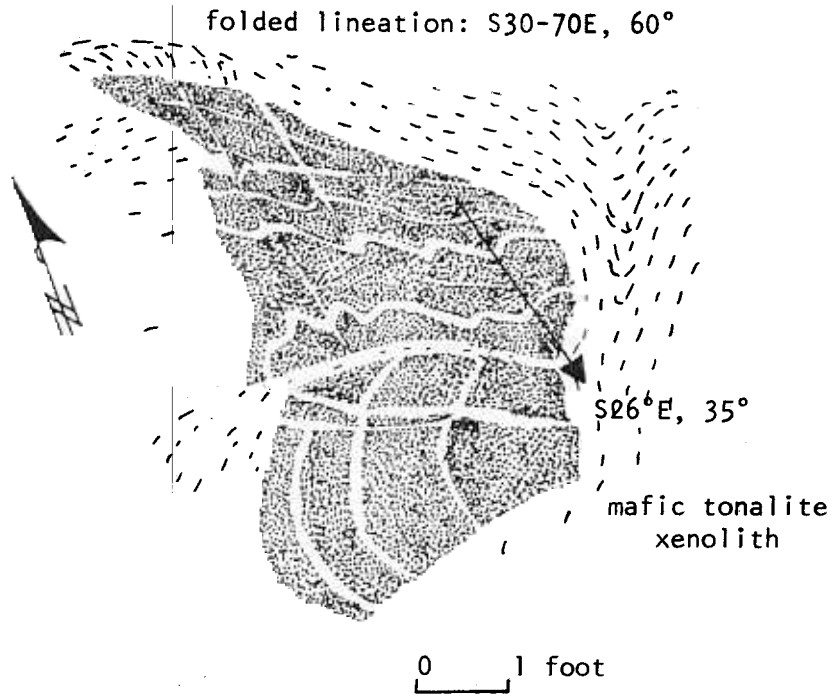


Figure 1 -- Xenolith of veined and folded hornblende tonalite in gneissic felsic tonalite

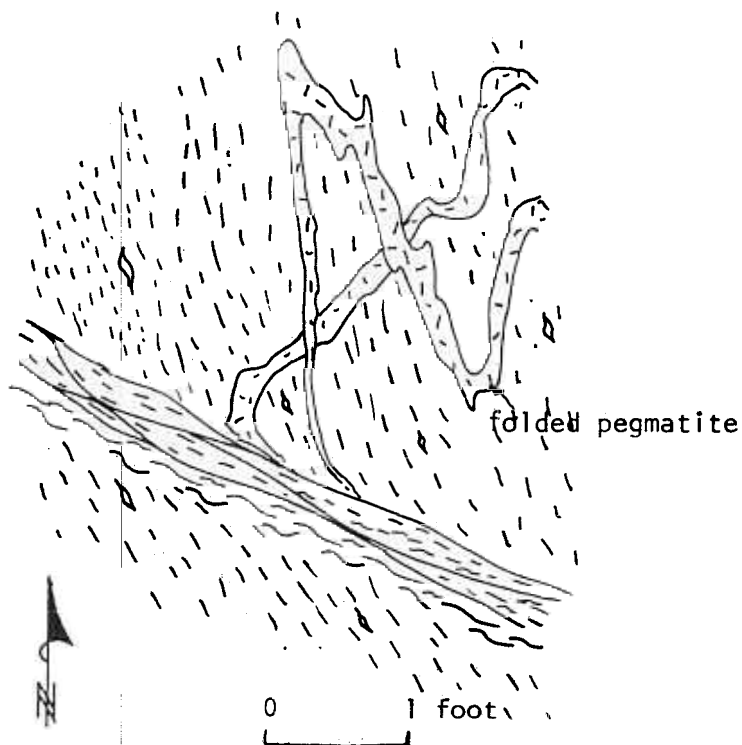


Figure 2 -- Two ages of cataclastic foliation in biotite tonalite with axial planes of folded pegmatite veinlets parallel to older cataclastic foliation. The second cataclastic foliation is mylonitic.