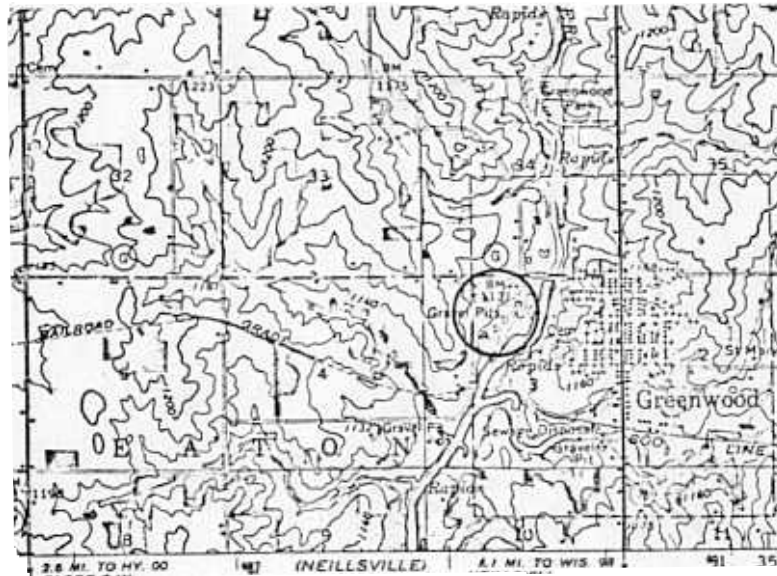


TITLE: Structures in Tonalite Flaser Gneiss at Greenwood

LOCATION: NE 1/4, NW 1/4, Sec 3, T 26 N, R 2 W, Owen 15' quadrangle



AUTHOR: P. E. Myers, UW - Eau Claire

DATE: January, 1978

SUMMARY OF FEATURES:

Granitic gneisses are well-exposed along Rock Creek east-northeast of Greenwood (SW 1/4, Sec. 31, T 27 N, R 1 W). These rocks are characterized by conspicuous chevron folds which plunge west at 35°-40°. This deformation is probably contemporaneous with the buckling of cataclastic foliation and layering at Cunningham Creek near Neillsville.

