

Title: Wyalusing

Location: Chicago, Burlington, and Quincy Railroad quarry on County Highway "X" at north edge of the community of Wyalusing in the NW $\frac{1}{4}$, SW $\frac{1}{4}$, Sec. 31, T.6N. R.6W., Grant County (Clayton 7.5-minute topographic quadrangle, 1962).



Author: M. E. Ostrom (modified from Starke, 1949, Shea, Cline 1959 and 1960, and Ostrom and Cline 1970).

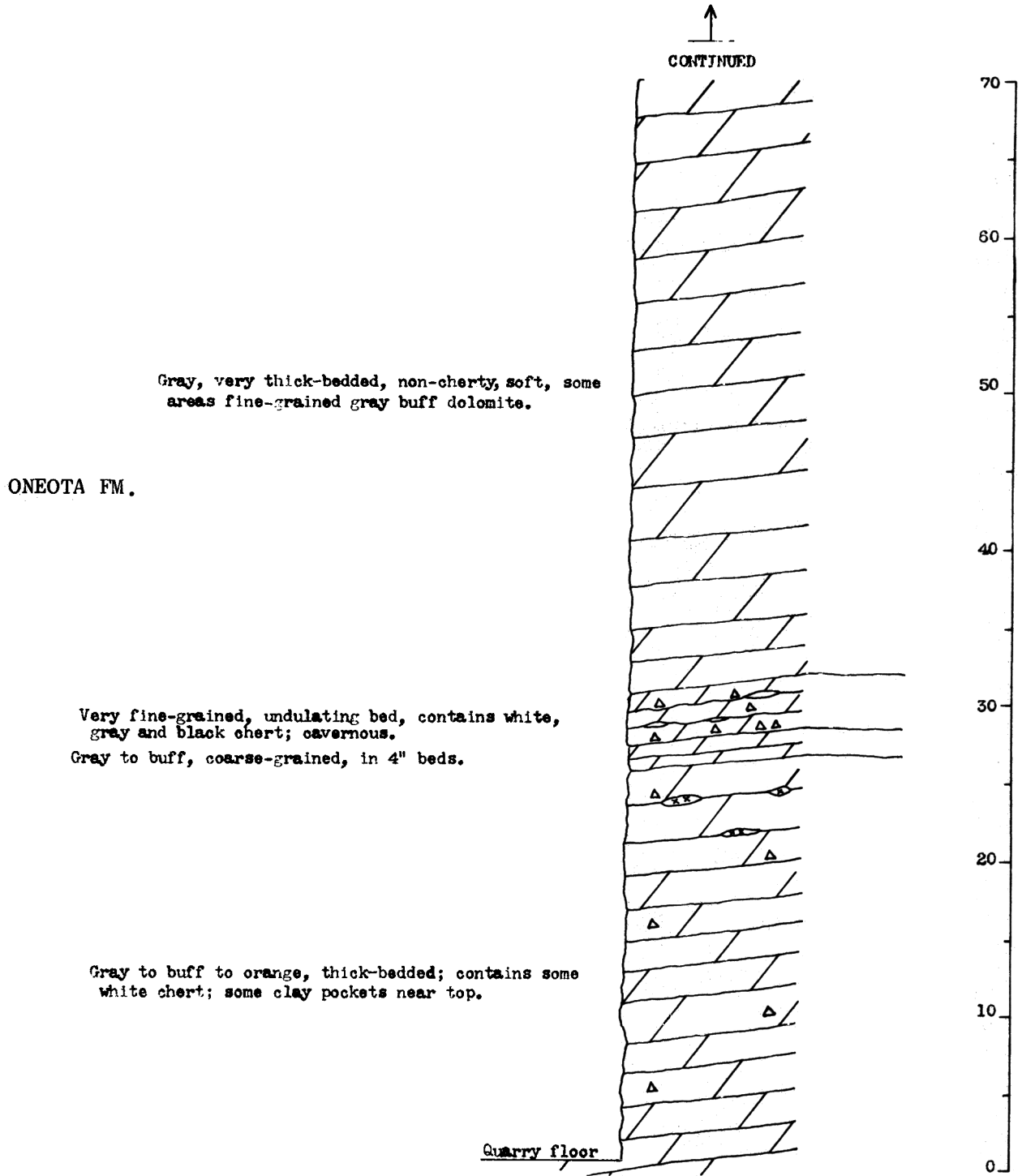
Description: This quarry, exposing approximately 185 feet Prairie du Chien strata, is probably the most nearly complete exposure of the Prairie du Chien in the state of Wisconsin. George Starke (1949) described the rocks exposed in this quarry and estimated that the floor of the quarry lies some 30 feet above the base of the Oneota Formation.

The Willow River Formation at this site was studied in detail by Carozzi and Davis (1964).

Angular unconformity of beds at the Oneota/New Richmond contact is clearly shown on the high southeast quarry face. Here eastward dipping beds of Oneota Dolomite are overlain by flat-lying beds of the New Richmond Member.

There is an excellent exposure of the Oneota and Shakopee Formations in a quarry at the north village limits of Bagley. It can be reached by following

CHICAGO, BURLINGTON AND QUINCY RAILROAD QUARRY
 NW $\frac{1}{4}$, SW $\frac{1}{4}$, Sec. 31, T. 6N., R. 6W.



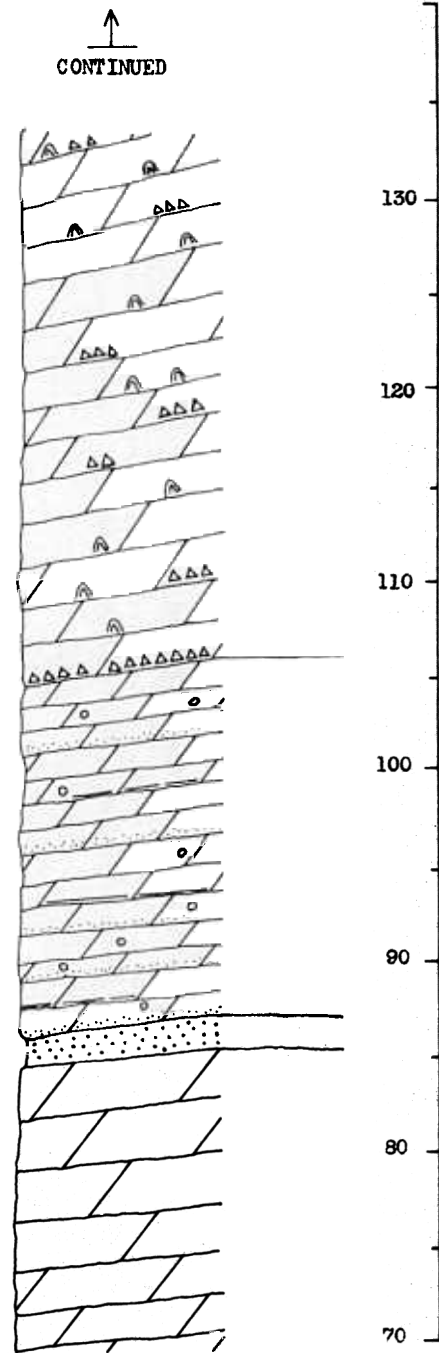
CONTINUED

Algal structures profuse; stringers of chert throughout; basal foot is weathered chert.

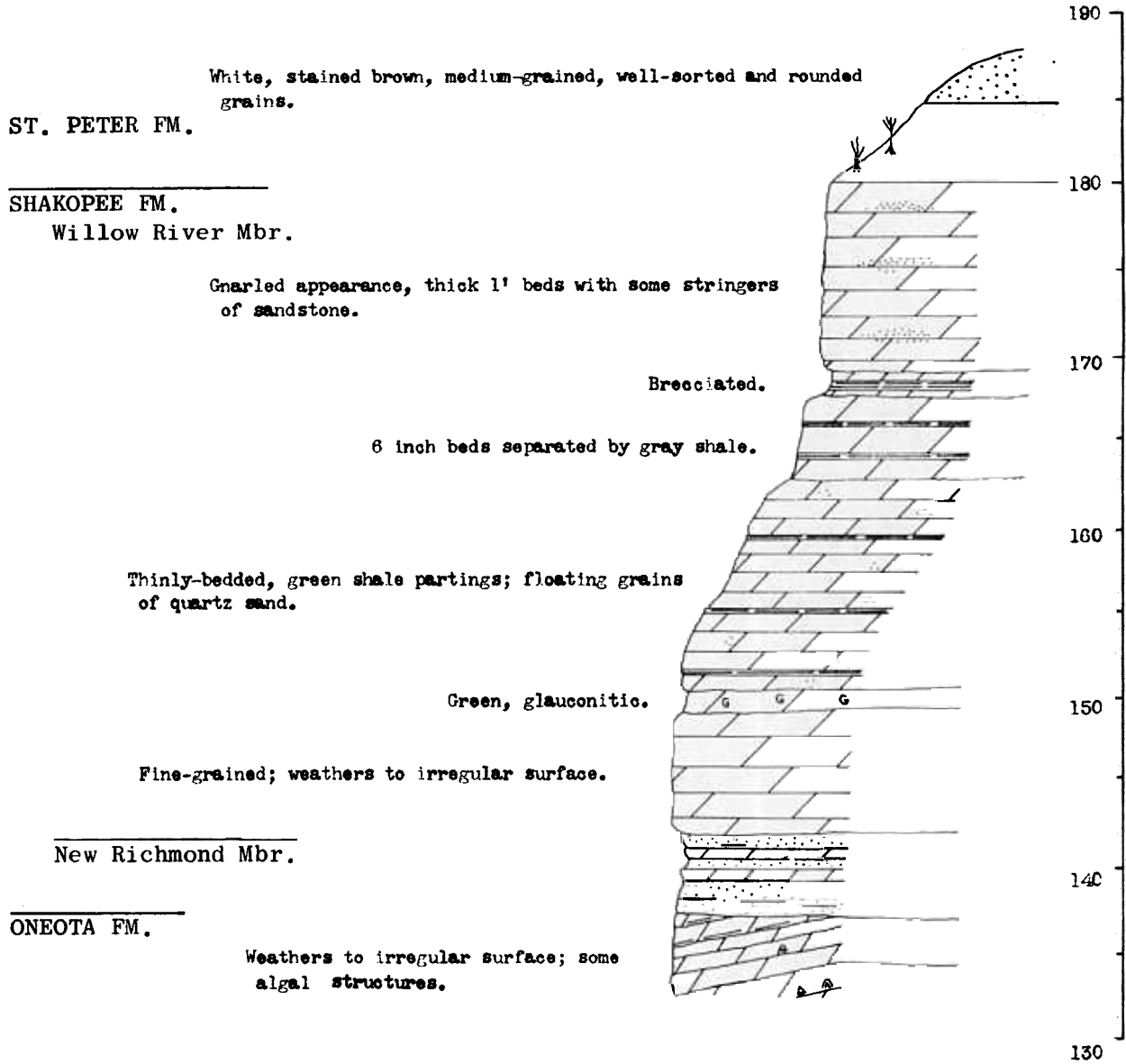
Conglomeratic with dark gray pebbles; well-bedded with some green shale partings and some clean white quartzose beds.

White, medium-grain; some green specks.

Gray, very thick-bedded, non-cherty, soft, some areas fine-grained gray buff dolomite.



CONTINUED



County Highway "X" south for a distance of 3.5 miles from the Wyalusing Quarry Stop. The Bagley quarry is an especially good location to examine fossil algae.

Significance: Exposure clearly illustrates the contact relationship of the Shakopee and Oneota Formations.

What is the relationship? What is your interpretation? Have you seen a similar relationship at previous stops? Closely examine the dolomite. Can you find fossils and what are they? Note the oolites. What do they signify? Note the beds of stromatolitions. What do they signify? What was the environment of deposition of the Oneota Formation?

References: Starke, 1949; Shea, 1960; Cline 1959 and 1960; Ostrom and Cline, 1970; Carozzi and Davie, 1964.