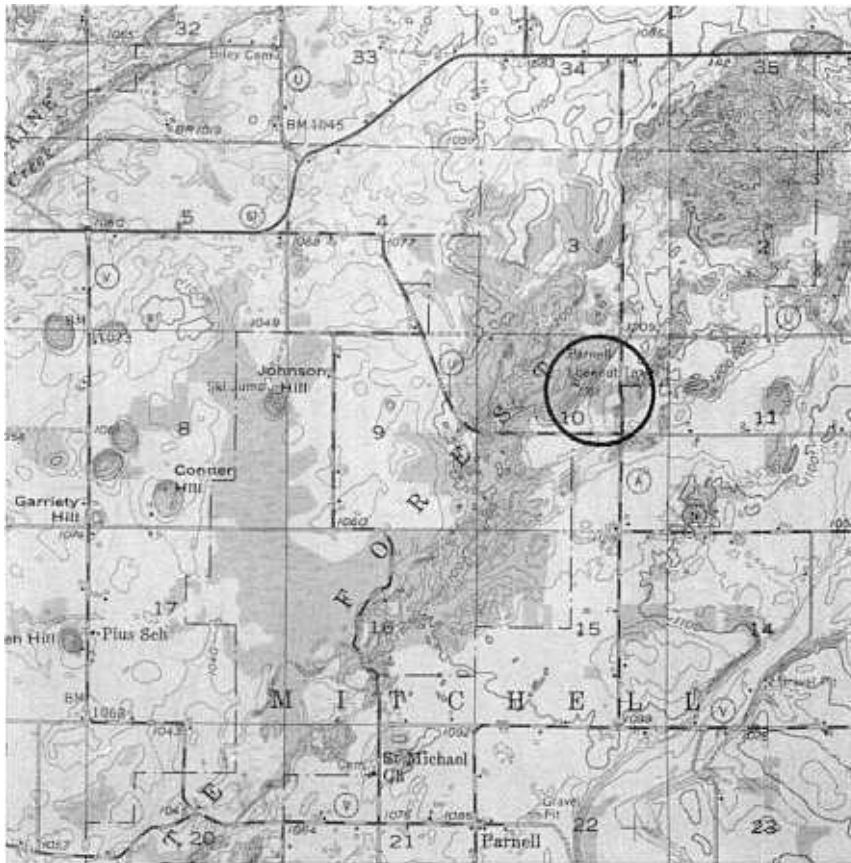


Title: Parnell Lookout Tower

Location: NE 1/4, Sec. 10, T. 14 N., R. 20 E., Kewauskum 15' Quadrangle, Sheboygan County. Park in lot and walk up tower. This lookout tower is open to the public and provides an excellent view of the kettle moraine.



Author: David M. Mickelson

Description: The tower is situated on the rough, hummocky topography of the eastern (Lake Michigan Lobe) edge of the Kettle Moraine. To the east, a drainageway (Mink Creek) formed along the margin of the retreating Lake Michigan Lobe ice, carried meltwater toward the south. This drainageway can be crossed on C.T.H. F just north and south of the town of Parnell. The horizon on the west is the Green Bay Lobe edge of the Kettle Moraine and topography similar to that at the tower exists there. Between the two edges, conical hills (moulin kames) can be seen. These formed in rapidly melting glacier ice as debris from on top of and within the ice accumulated at the base of near vertical shafts in the glacier. The low areas between the kames were subsequently filled with lake sediment and outwash. The composition of these hills can be seen at Garriety Hill. To the southwest of the tower the Parnell esker can be seen (see Greenbush Kettle, Greenbush Ski Run, Mink Creek, Garriety Hill, Parnell Esker).

Significance: This stop allows a view of the Kettle Moraine from edge to edge so proper perspective on the distribution of deposits and landforms can be gained. The origin of this classic area of glacial deposits has been recognized since 1878 when Chamblin discussed the area.

References: Alden, 1918; Black, 1971, 1974.