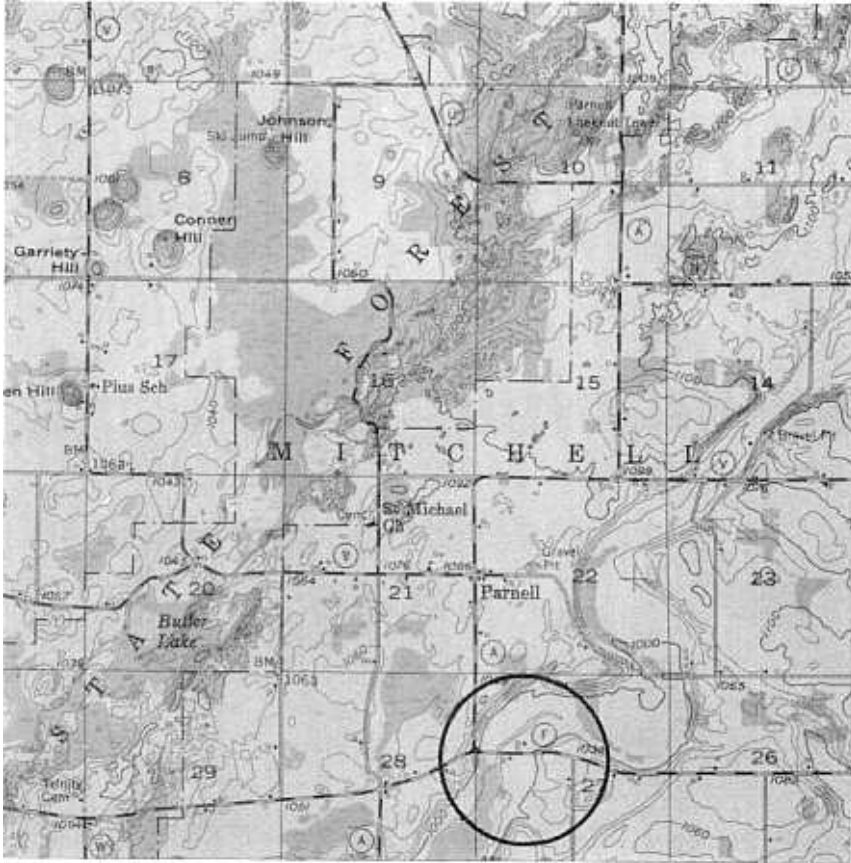


Title: Mink Creek

Location: NW 1/4, Sec. 27, T. 14 N., R. 20 E., Kewauskum 15' Quadrangle, Sheboygan County. Park and view from road.



Author: David M. Mickelson

Description and Significance: Stop in the stream valley and note the size of the present-day stream. Could a stream of this size cut a valley this large? This wide valley can be traced northward about 4 miles before it disappears among morainal deposits of the Lake Michigan Lobe. To the south, it flows into the North Branch of the Milwaukee River. Since the wide valley is too large to have been cut by the present stream and since it has no source other than the moraine a short distance to the north, we conclude that it once carried large volumes of meltwater away from the melting ice margin to the northeast. If a pit were dug in the valley floor, sand and gravel would also provide evidence of stream deposition. What kind of stream would have been flowing here at that time?

References: Alden, 1918; Black, 1971, 1974.