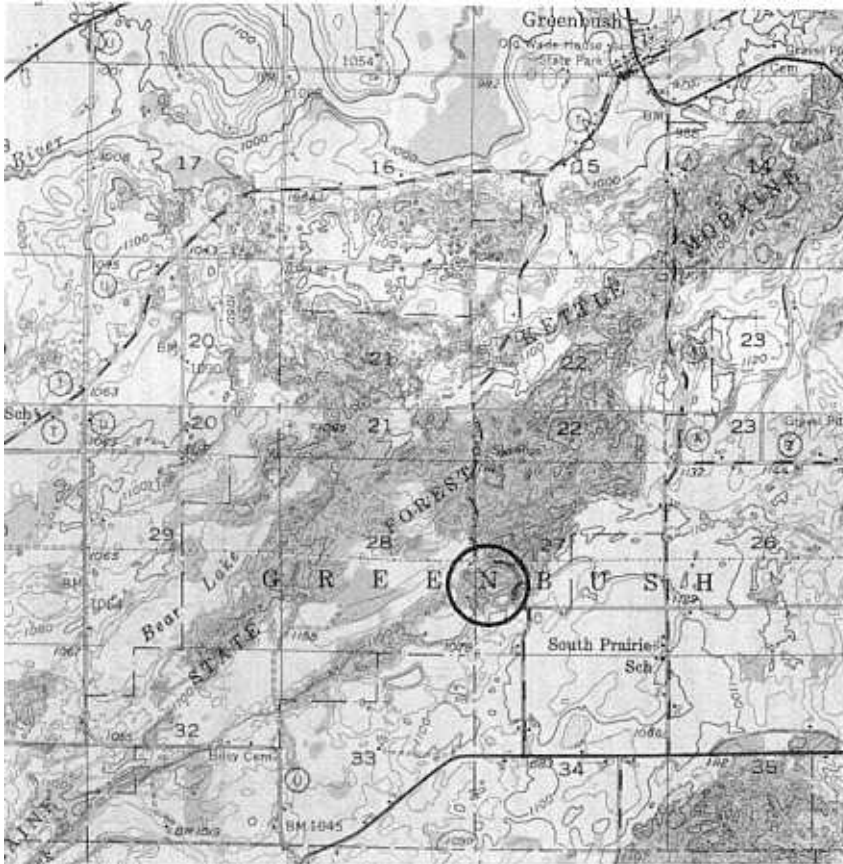


Title: Greenbush Kettle

Location: SW 1/4, Sec. 27, T. 15 N., R. 20 E., Kewauskum 15' Quadrangle, Sheboygan County. Park near geologic marker.



Author: David M. Mickelson

Description and Significance: Kettle holes are common features in end moraines (glacial debris usually deposited as a hummocky ridge along the ice margin) in Wisconsin. The ice near the base of glaciers is usually laden with debris scraped from the land surface. As the ice thins because of melting debris accumulates on the irregular ice surface. Eventually, only isolated blocks of ice remain and if they are covered with debris, a depression in the land surface is formed after the ice block has melted. The huge number of kettles on both edges of the Kettle Moraine have given the feature its name (see Greenbush Ski Run and Parnell tower).

References: Alden, 1918; Black, 1971, 1974; Thwaites, 1926.