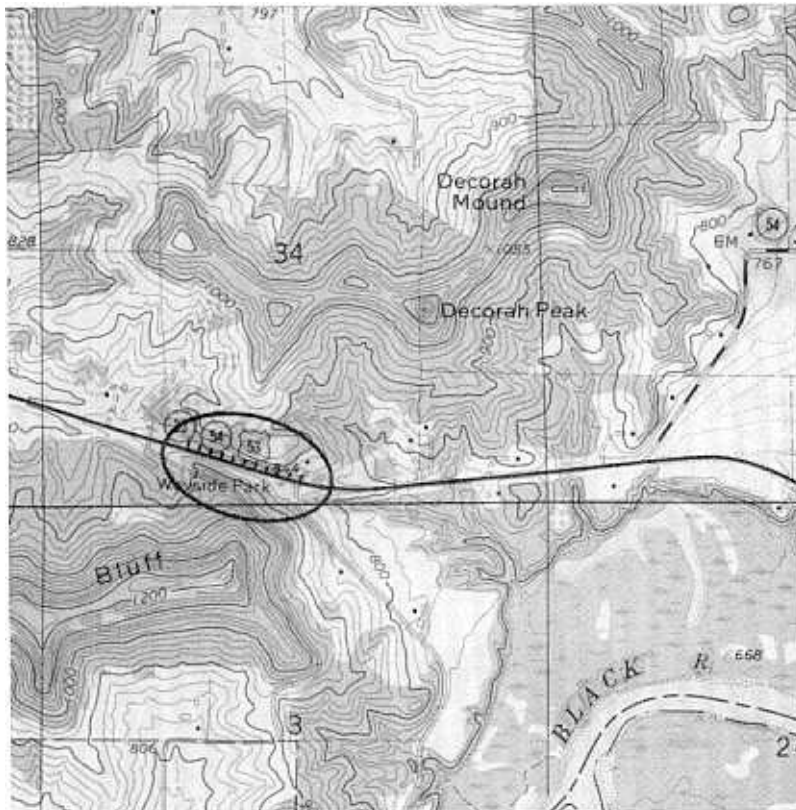


Title: Decorah Peak

Location: Exposure of north side of Highway 53 in roadcut 1.2 miles east of City of Galesville at Decorah Peak in the SW $\frac{1}{4}$ , SE $\frac{1}{4}$ , Sec. 34, T.19N., R.8W., Trempealeau County (Galesville 7.5-minute topographic quadrangle, 1973).



Author: M. E. Ostrom (modified from Ostrom, 1970)

Description: Outcrop displays the Wonewoc and Lone Rock Formations to excellent advantage. Refer to the Whitehall stop for detailed discussion. Following is a description of the exposure:

CAMBRIAN SYSTEM

St. Croixan Series - Franconian Stage

		<u>Lone Rock Formation</u>
		Reno Member (20.0 + feet)
57.2' - 77.2'	20.0+	Sandstone, gray green and brown, fine grained, thin bedded and cross-bedded, glauconitic; some beds of ripclast; much "wormstone" in lower 10 feet.
		Tomah Member (10.0 feet)
47.2' - 57.2'	10.0'	Sandstone, light yellow gray, fine and very fine

grained, shaly and micaceous, dolomitic, thin bedded, trace of glauconite.

Birkmose Member

- |         |      |  |
|---------|------|--|
| - 47.2' | 8.0' | Sandstone, very fine grained, and siltstone, gray thin bedded and uneven bedding, dolomitic, trace glauconite. |
| - 39.2' | 5.0' | Dolomite and greensand conglomerate and interbedded greensand.   |
| 34.2'   | 2.5' | Sandstone, gray green, fine grained with little medium and very fine, massive, cross bedded, very glauconitic  |

Elk Mound Group  
Wonewoc Formation

Ironton Member

- |               |      |  |   |
|---------------|------|--|---|
| 26.7' - 31.7' | 3.5' | Sandstone, light yellow gray, fine grained with little very fine and medium, slightly silty, massive bedded with poorly defined cross bedding. Base slightly uneven. |   |
| 23.2' - 26.7' | 3.5' | Sandstone, light yellow gray, coarse and medium grained with little fine, massive bedded and cross bedded; scattered brachiopod fragments.                           |   |
| 20.2' - 23.2' | 3.0' | Sandstone, light yellow brown, medium and coarse grained, massive bedded, scattered brachiopod fragments.  |   |
| 18.7' - 20.2' | 1.5' | Sandstone, light yellow gray, fine grained with little medium and trace of very fine, silty, massive bedded. "Wormstone bed".  |   |
| 17.7' - 18.7' | 1.0' | Sandstone, light yellow gray, medium and coarse grained, massive bedded and cross bedded.  |   |
| 16.7' - 17.7' | 1.0' | Same as #8 but predominantly fine and medium grained.  |   |
| 16.7'         | 9.0' | Sandstone, light yellow brown, medium and coarse grained, massive bedded and cross bedded.   |   |
| 7.7'          | 5.0' | Sandstone, brown, medium and coarse grained with a little very coarse, slightly silty. "Wormstone bed"   |   |
| 2.7'          | 0.7' | Sandstone, light yellow brown, very fine and fine grained with a trace of medium and coarse.   |   |
| 0.0'          | 2.0' | 2.0'   | Sandstone, light yellow brown, coarse and medium grained, massive bedded. |

Significance: The contact relationship and characteristics of mineralogy, lithology, texture bedding, fossils, and sedimentary structures of the Wonewoc and Lone Rock Formations are well shown. Examine these features closely.

On the basis of your examination is the contact sharp or transitional? Is it an erosional unconformity? What is your evidence? What is your interpretation of the environment of deposition of the Ironton Member? Birkmose Member? Tomah Member? Reno Member? How do these relationships of texture, composition bedding, fossils, and sedimentary structures compare to what you have seen of previous exposures?

References: M. E. Ostrom, 1970.