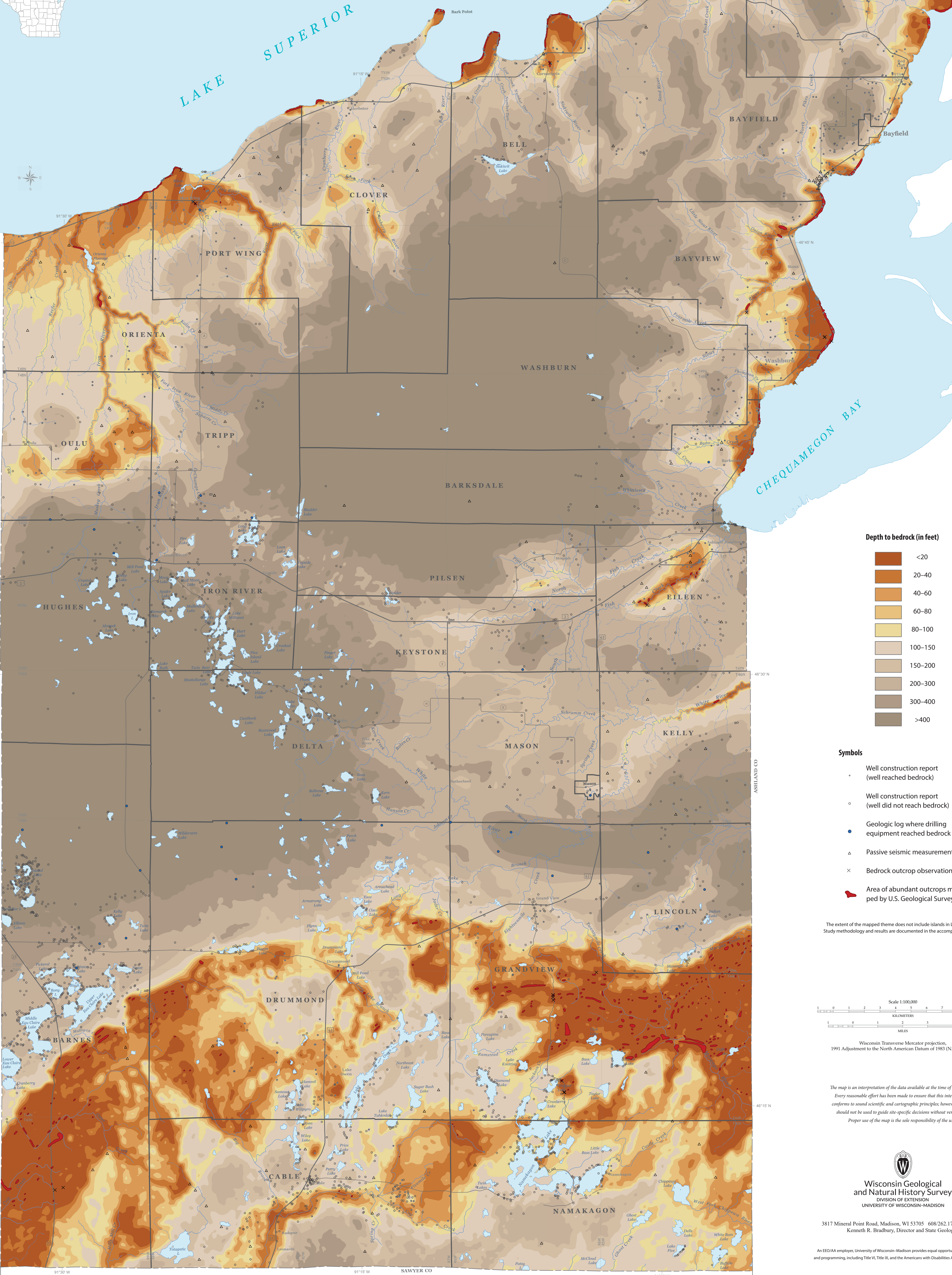


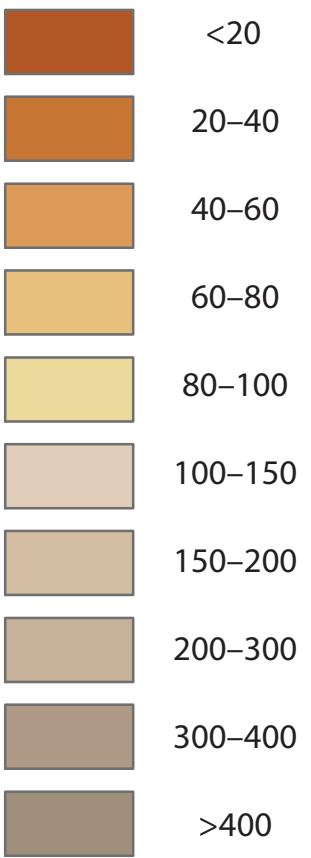
Depth to bedrock map of Bayfield County, Wisconsin

Grace E. Graham, Anna C. Fehling, Madeline B. Gotkowitz, and Kenneth R. Bradbury

Hydrogeologic atlas of Bayfield County, Wisconsin
Technical Report 005 • Plate 3 • 2019



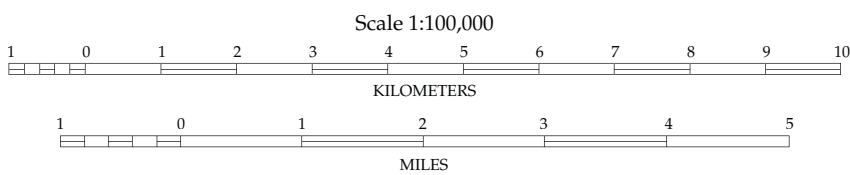
Depth to bedrock (in feet)



Symbols

- Well construction report (well reached bedrock)
- Well construction report (well did not reach bedrock)
- Geologic log where drilling equipment reached bedrock
- Passive seismic measurement
- Bedrock outcrop observation
- Area of abundant outcrops mapped by U.S. Geological Survey

The extent of the mapped theme does not include islands in Lake Superior. Study methodology and results are documented in the accompanying report.



Wisconsin Transverse Mercator projection, 1991 Adjustment to the North American Datum of 1983 (NAD 83/91).

The map is an interpretation of the data available at the time of preparation. Every reasonable effort has been made to ensure that this interpretation conforms to sound scientific and cartographic principles; however, the map should not be used to guide site-specific decisions without verification. Proper use of the map is the sole responsibility of the user.



Wisconsin Geological and Natural History Survey
DIVISION OF EXTENSION
UNIVERSITY OF WISCONSIN-MADISON

3817 Mineral Point Road, Madison, WI 53705 608/262.1705 wgnhs.org
Kenneth R. Bradbury, Director and State Geologist

An EEO/AA employer, University of Wisconsin-Madison provides equal opportunities in employment and programming, including Title VI, Title IX, and the Americans with Disabilities Act (ADA) requirements.