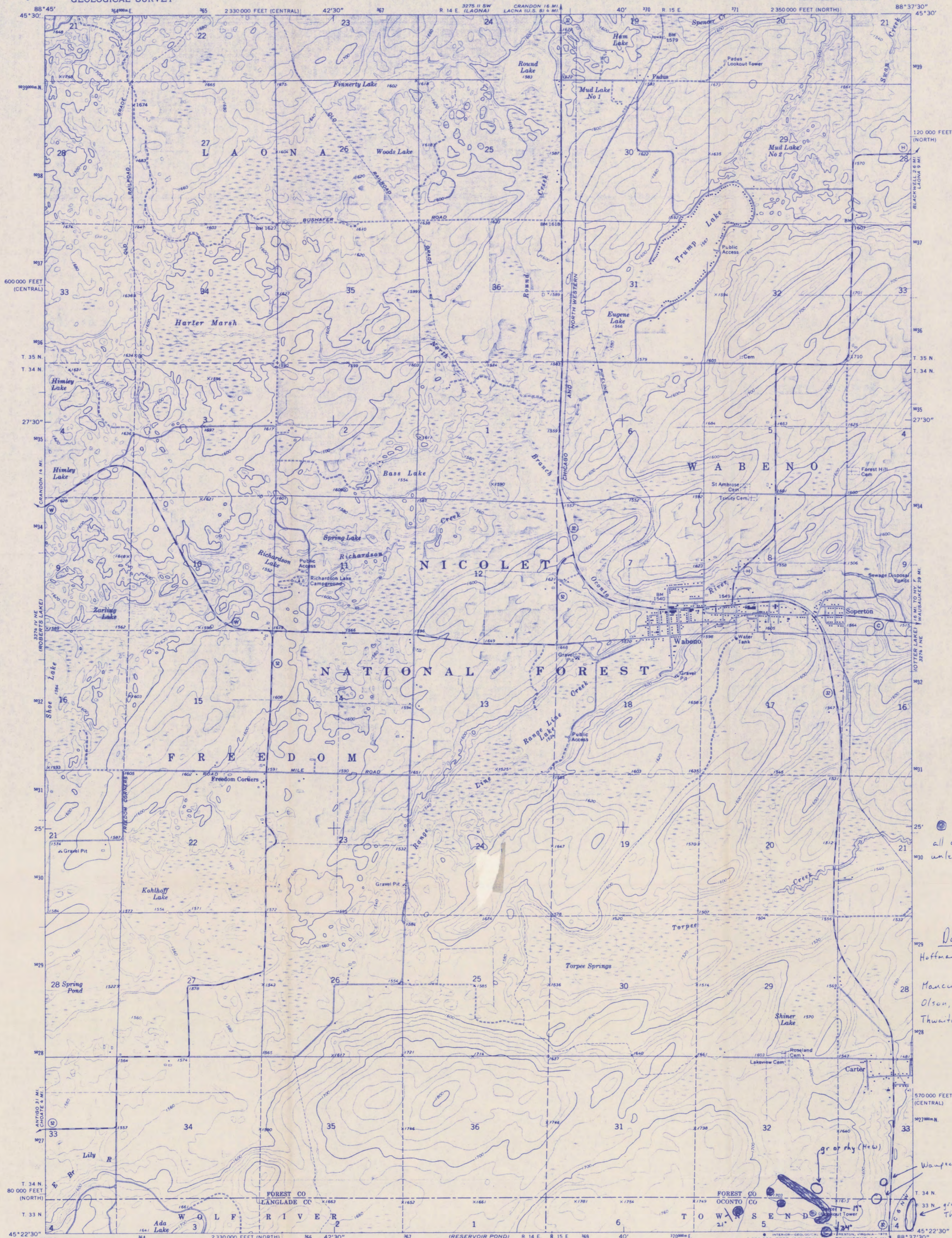


UNITED STATES
DEPARTMENT OF THE INTERIOR
GEOLOGICAL SURVEY

WABENO QUADRANGLE
WISCONSIN
7.5 MINUTE SERIES (TOPOGRAPHIC)
NW 1/4 WABENO 15' QUADRANGLE

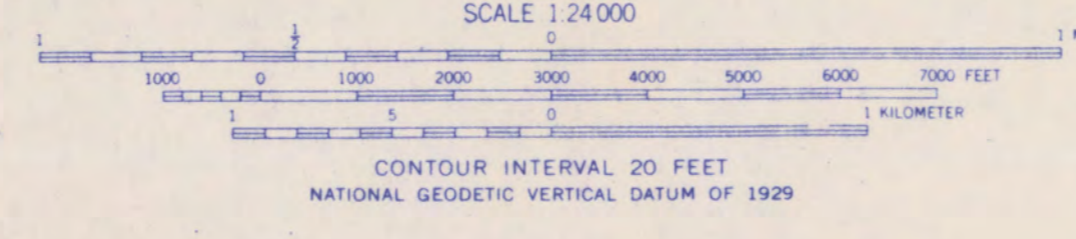


☉ = quartzite
all outcrops are quartzite
unless otherwise labeled

Data sources:
Hoffman and Wheelwright, 1943 (H+W)
Mancuso, 1960
Olson, 1962
Thwaites, 1925, looseleaf notes

gr of rhy (H+W)
Waupesa volcanics (Olson)
33 N gran to 4 outcrops Thwaites

Mapped, edited, and published by the Geological Survey
Control by USGS and USC&GS
Topography by photogrammetric methods from aerial photographs taken 1971. Field checked 1972
Hydrography compiled from information furnished by Wisconsin Department of Natural Resources
Projection: Wisconsin coordinate system, north zone (Lambert conformal conic)
10,000-foot grid ticks based on Wisconsin coordinate system, north and central zones
1,000-meter Universal Transverse Mercator grid ticks, zone 16, shown in blue. 1927 North American datum
Fine red dashed lines indicate selected fence and field lines where generally visible on aerial photographs. This information is unchecked



ROAD CLASSIFICATION

Primary highway, hard surface	Light-duty road, hard or improved surface
Secondary highway, hard surface	Unimproved road
Interstate Route	U.S. Route
	State Route



THIS MAP COMPLIES WITH NATIONAL MAP ACCURACY STANDARDS FOR SALE BY U.S. GEOLOGICAL SURVEY, RESTON, VIRGINIA 22092 AND BY THE WISCONSIN GEOLOGICAL AND NATURAL HISTORY SURVEY, MADISON, WISCONSIN 53705 A FOLDER DESCRIBING TOPOGRAPHIC MAPS AND SYMBOLS IS AVAILABLE ON REQUEST

WABENO, WIS.
NW 1/4 WABENO 15' QUADRANGLE
N4522.5-W8837.5/7.5
1972
AMS 3274 1 NW - SERIES V861

W.G. & N.H.S.
Open File
Collection
937