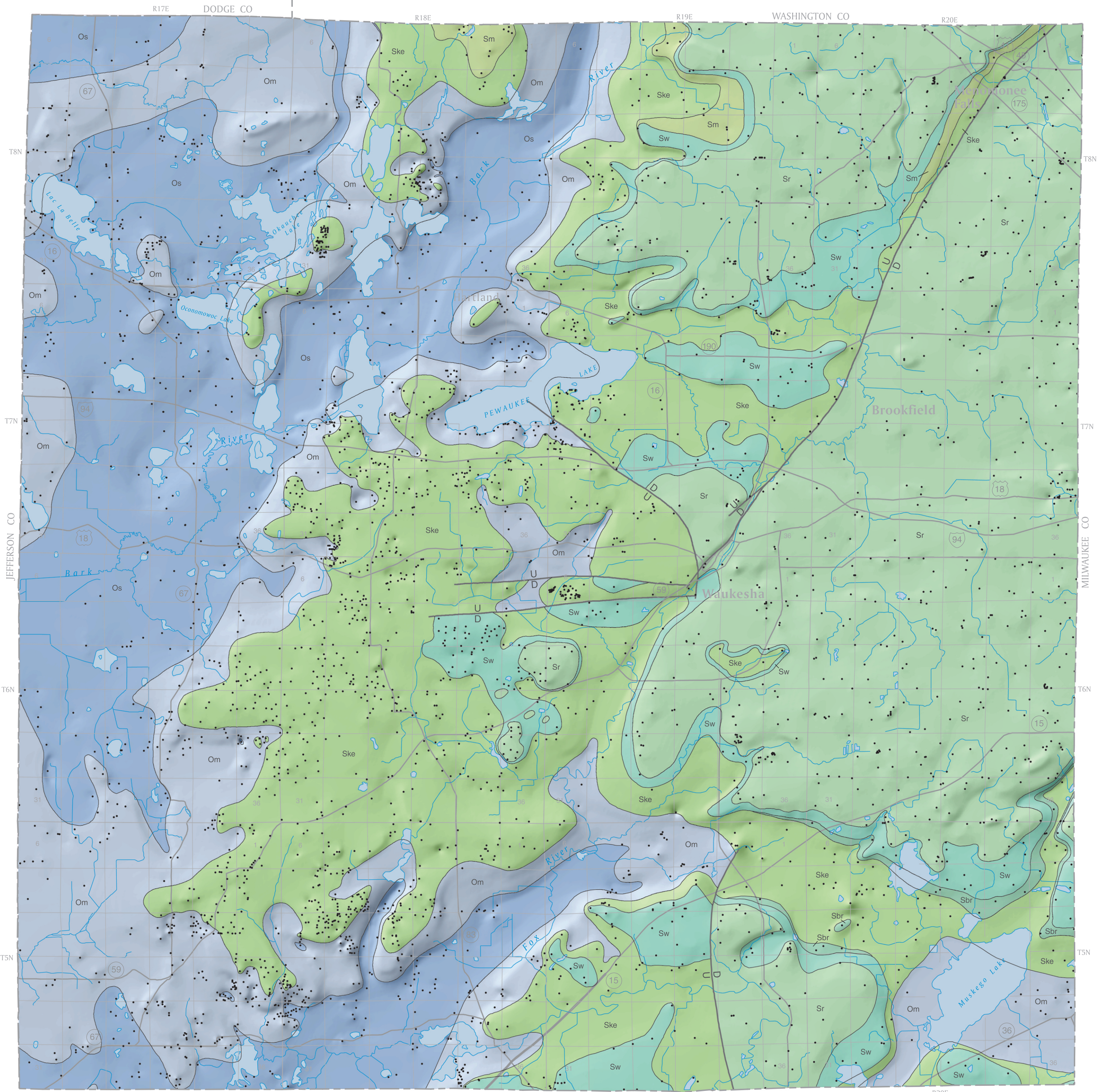


# Preliminary bedrock geologic map of Waukesha County, Wisconsin

K.M. Massie-Ferch and R.M. Peters

2004



## EXPLANATION

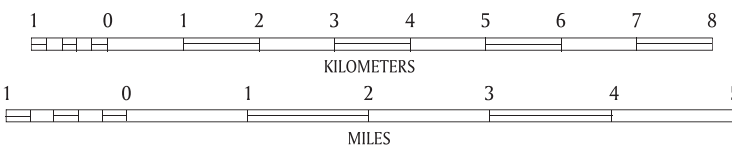
Map units shown are covered by younger, unconsolidated sediment varying in thickness from a few feet to more than 500 feet.

### SILURIAN

- Sr** Racine Formation. Dolomite, medium to coarse grained, thin- to thick-bedded, very light to light gray; fossiliferous.
- Sm** Manistique Formation. Dolomite, fine to medium grained, thin- to medium-bedded, light to medium gray.
- Sw** Waukesha Formation. Dolomite, medium grained, thin- to medium-bedded, light to medium gray, locally cherty.
- Sbr** Brandon Bridge Formation. Dolomite, very argillaceous, pale green to pink.
- Ske** Kankakee Equivalent. Dolomite, fine to medium grained, light to medium gray, locally cherty and fossiliferous.

### ORDOVICIAN

- Om** Maquoketa Formation. Shale, greenish gray to purplish; dolomite, very argillaceous, tan.
- Os** Sinnipee Group. Dolomite, tan to buff in color, thin to medium-bedded, fossiliferous, locally cherty.



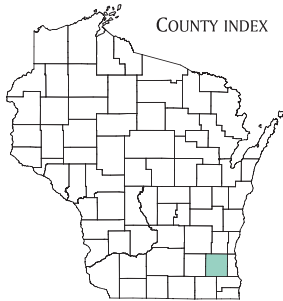
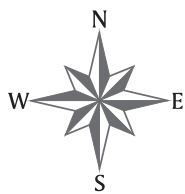
Shaded relief of bedrock surface vertical exaggeration 5x

Wisconsin Transverse Mercator Projection  
1991 adjustment to the North American Datum of 1983 (NAD 83/91)

- Contact
- Data point
- Fault. General direction of movement indicated by upthrown or downthrown.

This map represents work performed by the Wisconsin Geological and Natural History Survey and is released to the open files in the interest of making the information readily available. This map has not been edited or reviewed for conformity with Wisconsin Geological and Natural History Survey standards and nomenclature.

This map is part of an ongoing project funded by STATEMAP, the state component of the National Cooperative Geologic Mapping Program of the U.S. Geological Survey.



**uw Extension**

Wisconsin Geological and Natural History Survey  
3817 Mineral Point Road, Madison, Wisconsin 53705-5100  
phone 608/263-7389 fax 608/262-8086 [www.uwex.edu/wgnhs/](http://www.uwex.edu/wgnhs/)

James M. Robertson, *Director and State Geologist*

Data entry and processing by K.K. Zeiler. Cartography by D.L. Patterson.

Wisconsin Geological and Natural History Survey  
Open-File Report 2004-15A