

Preliminary bedrock geology of Sheboygan County, Wisconsin

Patrick I. McLaughlin



EXPLANATION

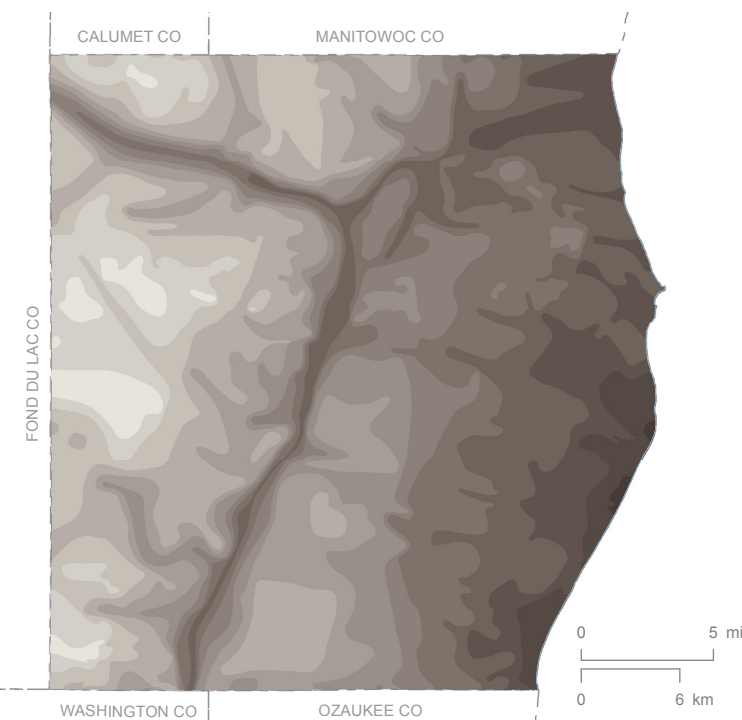
Map units shown are covered by younger, unconsolidated sediment varying in thickness from about 3 feet (1 m) to more than 490 feet (150 m).

SILURIAN

- Se Engadine Formation**
Light to medium gray, fine- to coarse-grained, burrowed and mottled dolostone with little to no chert. Contains a locally diverse fossil fauna associated with numerous reefs/bioherms with abundant echinoderm elements, corals, and stromatoporoids. The formation is more than 300 feet (91 m) thick.
- Sm Manistique Formation**
Light to medium gray, dominantly fine-grained dolostone; very cherty through much of unit. Contains restricted to open marine fauna of corals, stromatoporoids, and pentamerid brachiopods; fauna is locally very diverse and coarse grained where reefs/bioherms are present. The formation is up to 270 feet (82 m) thick.
- Sbb Burnt Bluff Group**
Light to dark gray dolostone, dominantly fine grained, though medium- and coarse-grained intervals are present. Some intervals have restricted fauna while others are barren with mud cracks and other evidence of intermittent subaerial exposure; chert common in some intervals. The group is up to 110 feet (33 m) thick.
- Smy Mayville Formation**
Light to dark gray dolostone, dominantly fine grained, though medium- and coarse-grained intervals associated with bioherms are present near the base. Some intervals have restricted fauna including a zone of pentamerid brachiopods near the top of the unit; chert is common throughout most of the formation. The formation is up to 180 feet (55 m) thick.

SYMBOLS

- Contact. Solid where position shown on map is generally within 3 km of the actual position; dashed where inferred.
- Core locations
- Well locations with WCRs (well construction reports)



Bedrock Elevation (in feet above mean sea level)

>950	800-850	650-700	500-550
900-950	750-800	600-650	450-500
850-900	700-750	550-600	<450

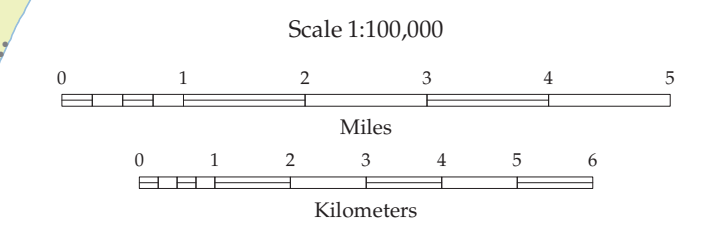
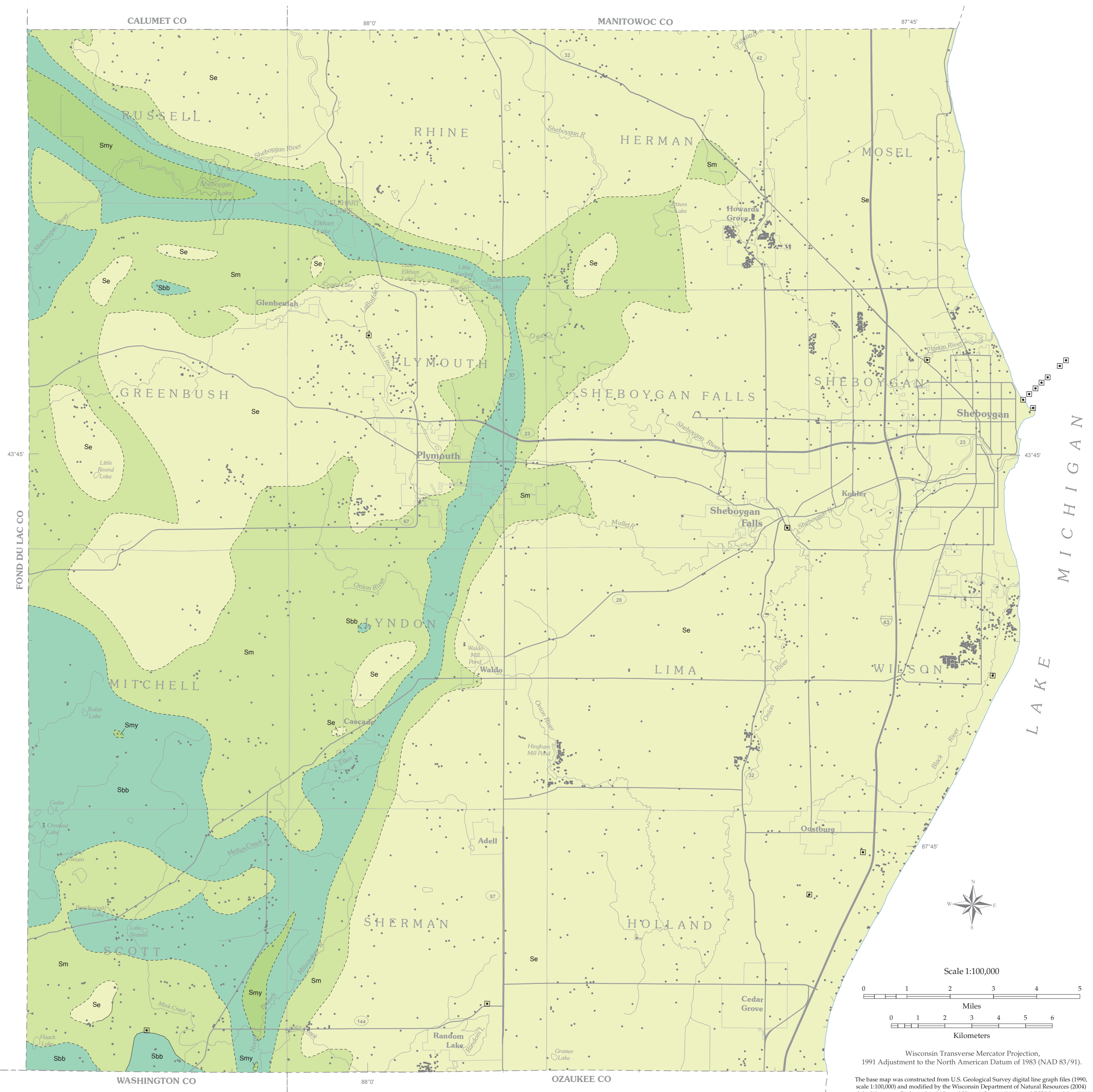
Wisconsin Geological and Natural History Survey
3817 Mineral Point Road, Madison, Wisconsin 53705-5100
608/263.7389 mapsales@uwex.edu
www.WisconsinGeologicalSurvey.org
James M. Robertson, Director and State Geologist



UW-Extension provides equal opportunities in employment and programming, including Title IX and ADA.

Supported by the U.S. Geological Survey, National Cooperative Geologic Mapping Program, under assistance Award No. G09AC00167, G10AC00263, and G11AC20212.

This map represents work performed by the Wisconsin Geological and Natural History Survey and is released to the open files in the interest of making the information readily available. This map has not been edited or reviewed for conformity with Wisconsin Geological and Natural History Survey standards and nomenclature.



Scale 1:100,000
Wisconsin Transverse Mercator Projection,
1991 Adjustment to the North American Datum of 1983 (NAD 83/91).
The base map was constructed from U.S. Geological Survey digital line graph files (1990, scale 1:100,000) and modified by the Wisconsin Department of Natural Resources (2004) and the Wisconsin Geological and Natural History Survey (2010); and ESRI StreetMap (2008).