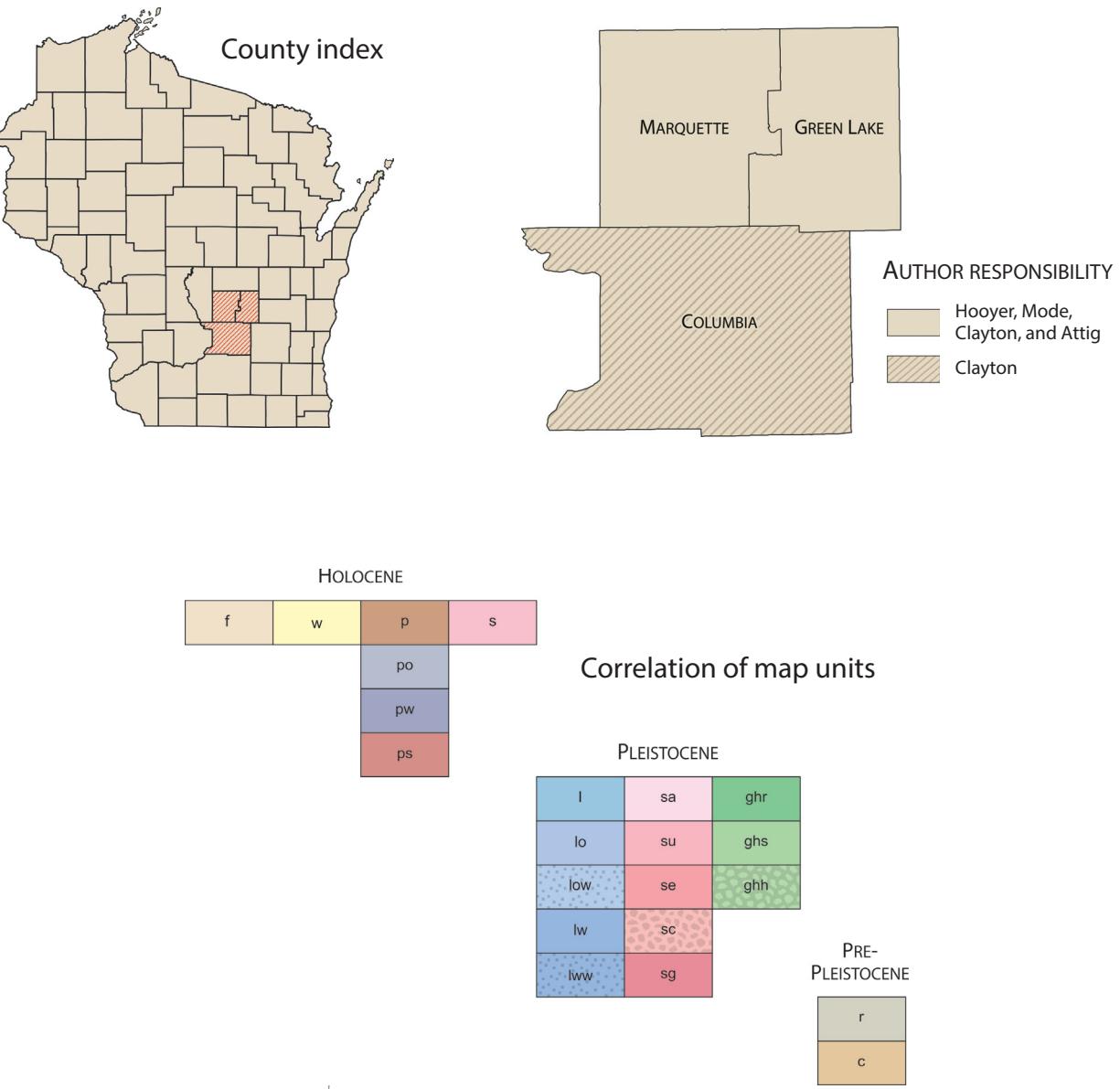


Preliminary  
Quaternary Geology  
of  
Columbia, Green Lake,  
and Marquette Counties,  
Wisconsin

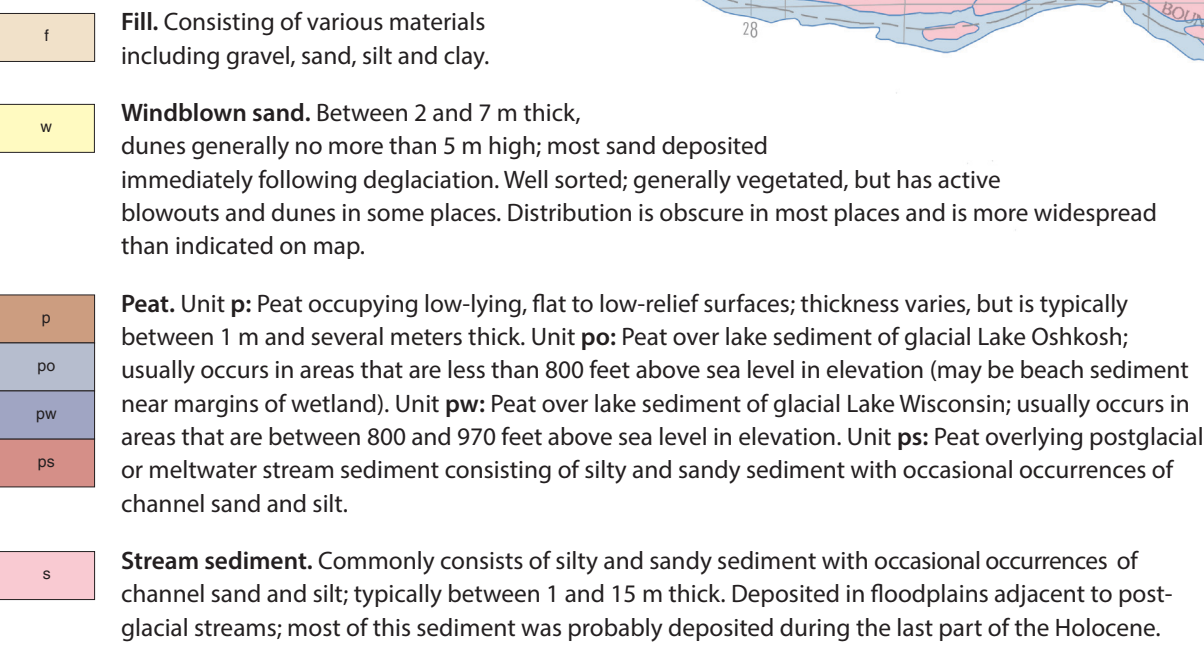
Thomas S. Hooyer, William N. Mode,  
Lee Clayton, and John W. Attig

Open-File Report 2015-01  
Plate 1 · 2015

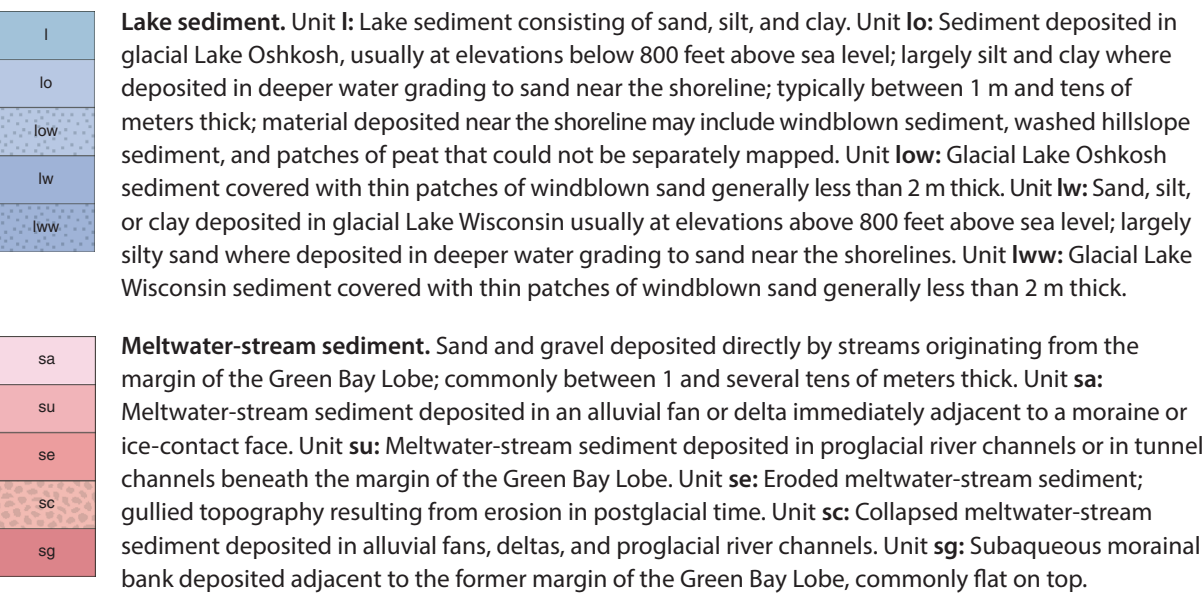


Explanation

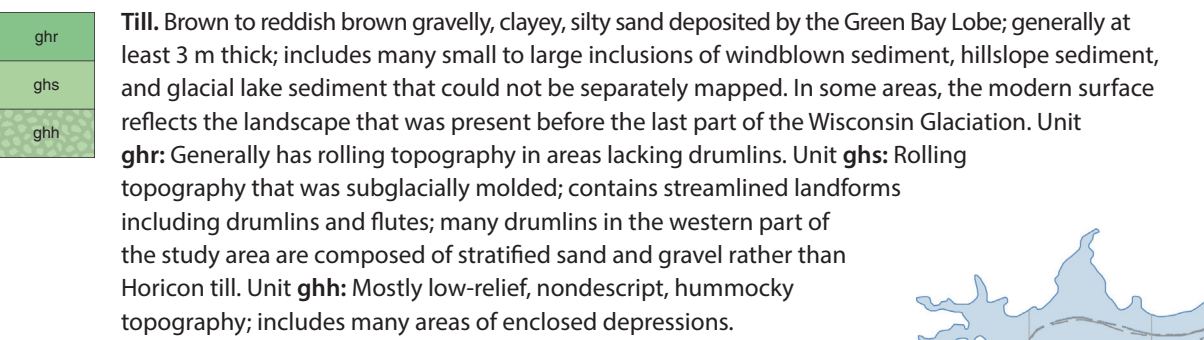
Postglacial deposits



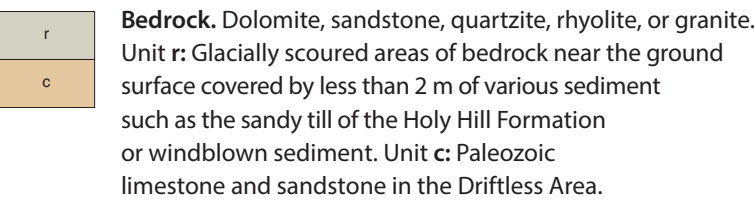
Glacial deposits, undifferentiated



Holy Hill Formation: Horicon Member

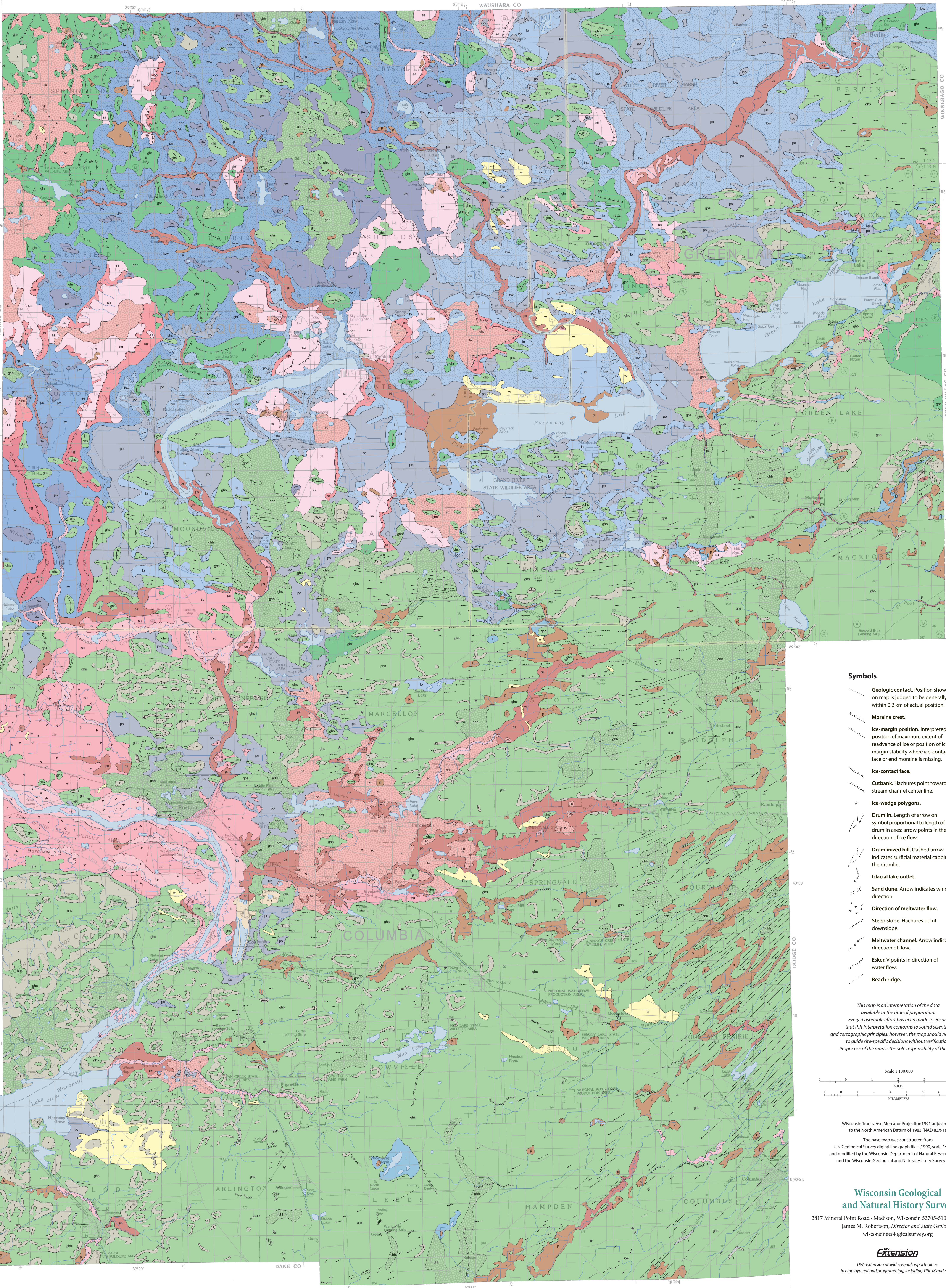


Bedrock

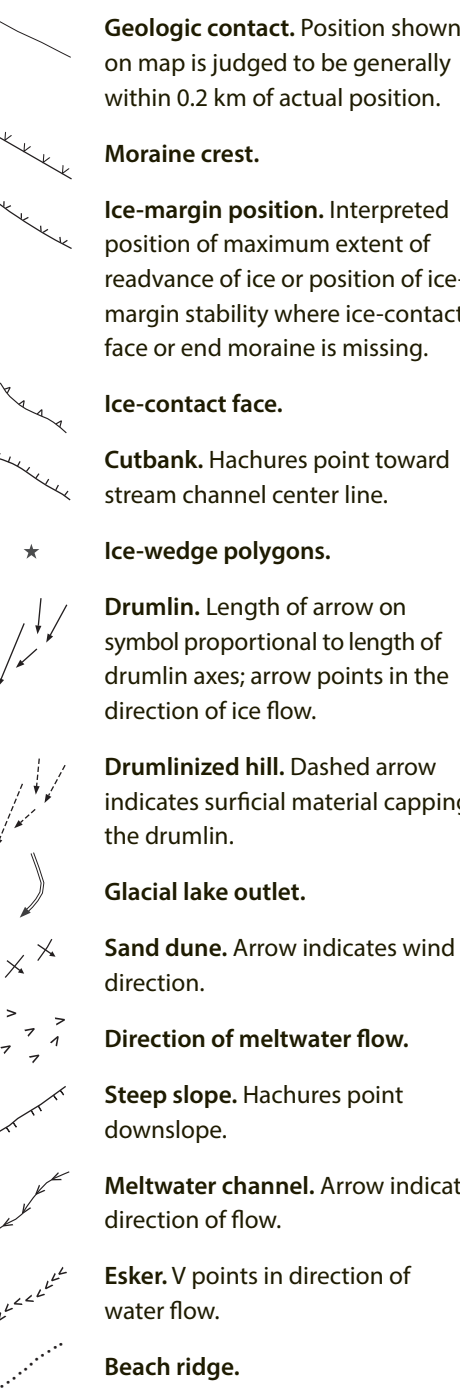


This geologic map was funded in part by the USGS National Cooperative Geologic Mapping Program under award numbers 03HQAG057 and 04HQAG030. The views and conclusions contained in this document are those of the authors and should not be interpreted as necessarily representing the official policies, either expressed or implied, of the U.S. Government.

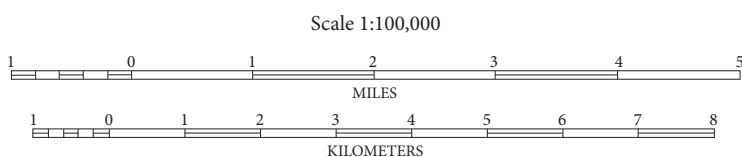
Cartography by D.L. Patterson.



Symbols



This map is an interpretation of the data available at the time of preparation. Every reasonable effort has been made to ensure that this interpretation conforms to sound scientific and cartographic principles; however, the map should not be used to guide site-specific decisions without verification. Proper use of the map is the sole responsibility of the user.



Wisconsin Transverse Mercator Projection 1991 adjustment to the North American Datum of 1983 (NAD 83/91).

The base map was constructed from U.S. Geological Survey digital line graph files (1990, scale 1:100,000) and modified by the Wisconsin Department of Natural Resources (1992) and the Wisconsin Geological and Natural History Survey (2012).

Wisconsin Geological  
and Natural History Survey

3817 Mineral Point Road • Madison, Wisconsin 53705-5100 • 608/263.7389  
James M. Robertson, Director and State Geologist  
wisconsin Geological Survey

Extension

UW-Extension provides equal opportunities in employment and programming, including Title IX and ADA.